



Tokyo University of
Agriculture and Technology
[Master's Course/Doctoral Course]

General Information for Studies and Course Description

Academic Year of

2021



Graduate School of Agriculture
For New Students

●Table of Contents●

The Objective of University, the objective of Graduate School of Agriculture	1
Diploma policy and Curriculum policy	2

I. About Curriculum ● 3

1. Basic points	3
(1) Academic year and semester	3
(2) Academic calendar	3
(3) Class timetable	3
(4) Class period	4
(5) Cancellation of Classes due to weather warning and/or suspension of transportation operation	4
(6) What to do when train/bus services are suspended or during infection control in schools, or at the death of student's close relatives	5
(7) Abbreviation for Division/School, Courses, and Programs	6
(8) Student ID Number	6
(9) Notification to students	7
(10) Office Hour for Educational Affairs Section	8
(11) University Web page	9

II. Registration Process ● 10

1. Basic concepts	10
(1) What is "Complete a class"	10
(2) Registration Period	10
(3) Registration Process	11
(4) Enrollment Request to take the course for other divisions	11
(5) Note on Registration Process	12
2. Examination and Grade	12
(1) Examination	12
(2) Grading system	13

III. About various procedures ● 15

1. Changing to your status in school register (leave, withdrawal, etc.)	15
(1) Various petition form	15
(2) Notes	15
2. Issuing of Certificate	16
(1) Automated Certificate Issuance System.....	16

IV. Course Registration FAQ ● 16

V. Access to Sports facilities and Campus map ● 17

1. Access to Facilities	17
(1) Sport Facilities	17
(2) Libraries	17
2. Fuchu Campus map, classroom map	17

VI. About SPICA and Google Classroom ● 18

1. SPICA (school information system login portal)	18
2. Google Classroom (Document Sharing tool)	19
3. Moodle (Learning Management System)	19

Master Course, Graduate School of Agriculture

VII. Requirements for Graduation and Registration Process ● 22

1. Requirements for Graduation	22
(1) Minimum number of credits required for graduation	22
(2) About Reinforcing subjects (for integrated education) and courses in other departments	22
2. About the Completion of your Program.....	24
(1) Requirements for the completion of each program	24
(2) Completion of double programs	26
3. Registration method	27
(1) Registration method for the courses which cannot be registered online	27
(2) Registration of Thesis related courses	29

VIII. Application for master thesis screening/examination ● 31

IX. Course Curriculum and Course Content ● 33

(1) Curriculum Policy	39
(2) The features of each course and program.....	39
(3) Curriculum	41
(4) Overview of courses	42

X. Code list for Thesis related course by program ● 43

1. Code numbers for Main advisor courses.....	43
2. Code numbers for Sub advisor courses	44

XI. Learning Teacher-Training Course ● 47

Graduate School of Agriculture Four-year Doctoral Course

XII. Doctoral Requirements and Subjects/Credits ● 50

1. Doctoral Requirements	50
(1) Required credits	50
(2) Credit transfer system	50
(3) Early completion	50

XIII. Application for doctoral thesis screening/examination ● 50

XIV. Long-term course study system ● 50

XV. Curriculum ● 51

1. Cooperative Division of Veterinary Sciences	51
(1) Curriculum Policy	53
(2) Major Track and Research Field	53
(3) Syllabus	53
Code list for Thesis guiding course by major track	54

XVI. Contact information of instructors at Graduate School of Agriculture ● 57

XVII. Offered Programs ● 57

XVIII. Forms and Template ● 58

The Objective of University

We boldly face and tackle to a challenge left by the society and science technology of 20th century; "realization of sustainable and evolvable society," and aim at being a mission-oriented science technology university that contributes to the development of science technology in harmony with the society and environment pivoting to the education and study in the areas of Agricultural and Engineering Science and their fusion areas, by continuously improving the quality of education and research responding to the radical expansion and deepening of knowledge in wider academic fields.

As a mission-oriented Science and Technology University, we aim at

○ In Education, not only the transfer of knowledge, focusing to foster the ability to develop and explore the intelligence and to resolve, and bringing up professionals with high expertise and academics who have high moral.

○ In research, fulfilling our social responsibilities by actively engaging comprehensive and interdisciplinary studies in concert with society, in addition to the creative research based on free flowing of thoughts while considering the development of science and the requests from society.

○ In both education and research, we promote international interaction and collaboration to learn from and contribute to the world.

○ In all our activity including education and study as well as operations, we evaluate and disclose all the process from setting the goal and plan as well as the progress in order to optimize the utilization of our resources as open university, to continuously promote the improvement of our organization and activities.

The Objective of Graduate School of Agriculture

In order to bring up individuals who can solve interdisciplinary problems in and out of the country with highly advanced expertise and techniques in agricultural science and related fields to generate sustainable society with higher perspective based on wide range of knowledge, and can work internationally as a problem solving professionals at the fields in and out of the country, or proceed to mission-oriented doctoral course with abundance of expertise, we set the following educational objectives.

- ① Foster highly advanced expertise and techniques related to agricultural and forestry science and life science including food, health, bioscience, biological resources, resource management, information, and social infrastructure of farming villages which are essential to resolving the problems of population, food, resources, and environment and required in sustainable society.
- ② While establishing respective expertise in each specialized field, makes it one's mission

to contribute to the sustainable development of society, and develop one's capability and insights to deeply comprehend and see-through nature, human being and society and flourish as an international person with high perspective.

- ③ Develop the capability to research the assignment, fully use the scientific methodology to satisfy the requests from the society, and solve the issues based on the situation in the field, esteem the study moral, positively study and research and make reports and papers, and present it at academic conferences or international meetings.
- ④ Develop the capability to communicate well, understand the history and culture of foreign countries, balance the interdisciplinary and field specific studies, and lead the international society.

Diploma policy and Curriculum policy

TUAT's diploma policy and curriculum policy are posted in the below URL. Please refer to it when you make your study plan.

【Tokyo University of Agriculture and Technology Web site】

Home > Campus Life & Career Support > Campus Life > Three policies

http://www.tuat.ac.jp/campuslife_career/campuslife/policy/



I. About Curriculum

1. Basic points

(1) Academic year and semester

Academic year starts on April 1st and ends March 31st of the following year. An academic year is divided into 4 quarters of 1st, 2nd, 3rd and 4th quarters. We also call 1st and 2nd quarters as Spring Semester (from April 1st to September 30th) , and 3rd and 4th quarters as Fall Semester (from October 1st to March 31st of the following year) .

(2) Academic calender

Academic calender will be posted on the University web page as well as the web bulletin board for Fuchu campus. If any changes will be made, it will be posted on the bulletin board on the main building. Academic calender will be revised every year.

【Web page for Tokyo University of Agriculture and Technology】

Home>Campus Life & Career Support>Campus Life>Academic calendar
http://www.tuat.ac.jp/campuslife_career/campuslife/gakunenreki/



【Web bulletin board for Fuchu campus】

<http://t-board.office.tuat.ac.jp/A/menu.php#Cheu>



(3) Class timetable

- ① During 1st and 3rd quarters, the classes will be mainly held according to the weekly class timetable. (We call this "regular class" which will be held at the same time and place every week) . But some classes are held irregularly or intensively.
- ② In 2nd and 4th quarters, classes will be mainly intensively.
- ③ Printed Class timetable for Spring Semester (1st and 2nd quarters) will be distributed by 1 week before the start of 1st quarter classes and printed class timetable for Fall semester (3rd and 4th quarters) will be distributed 1 week before the start of 3rd semester classes.
- ④ Class timetable for the full year will be posted to the the TUAT home page one week before the start of 1st semester class. However, regarding the timetable for Fall Semester (3rd and 4th quarters) , the updated version will be posted one week before the start of 3rd semester class.
- ⑤ Whenever the Class timetable becomes updated, or any class be cancelled, or make up class will be held, they all be notified on the WEB bulletin board. Please ensure to check the WEB bulletin board.
- ⑥ The scheduled period for classes might be changed. Please refer to the class timetable, and for any questions, please contact to Educational Affairs Section.

(4) Class period

Class period is as follows.

A class will be 90 minutes except for special case such as experiment, practice or exercise.

Class Period	1st Period	2nd Period	3rd Period	4th Period	5th Period	6th Period
Time	8:45	10:30	13:00	14:45	16:30	18:15
	∩	∩	∩	∩	∩	∩
	10:15	12:00	14:30	16:15	18:00	19:45

(5) Cancellation of Classes due to weather warning and/or suspension of transportation operation

In the event of natural disaster, the class (including periodic exam) will be as follows. When cancellation of classes will be decided, it will be generally posted to the Update Information in the TUAT web page. However, it would be informative for you to know the following criteria and make your own judgment to stay safe.

- ①When Emergency Warning (Storm, Heavy Rain, Flood, Heavy Snow, Blizzard) is in effect as of 6 a.m. in the morning, classes in the morning (1st and 2nd class period) will be cancelled, and if it is in effect as of 10 a.m., classes in the afternoon (3rd - 6th class period) will be cancelled, too.
- ②Regarding the class cancellation while Warning (Storm, Heavy Rain, Flood, Heavy Snow, Blizzard) is in effect, Vice president, Trustee for Education will determine pursuant to the following criteria.
 - When such Warning is in effect as of 6 a.m. and it is required for safety, classes in the morning will be cancelled.
 - When such Warning is in effect as of 10 a.m. and it is required for safety, classes in the afternoon will be cancelled.
- ③In the event of natural disaster or accidents beside above ① and ②, and it is required for safety for each division or department, the heads of those organization may decide the cancellation of the class.
- ④In the event of natural disaster or accidents (including strikes, etc.) beside above ① - ③ and two lines or more among the below listed rail lines declared to stop their service, the class will be cancelled as below; JR Chuo line (between Shinjuku and Tachikawa) , JR Musashino line (between Fuchu-honmachi and Musashi-Urawa) , and Keio line (between Shinjuku and Keio-Hachioji and between Chofu and Hashimoto)
 - When the operation has not been re-started as of 6 a.m. in the morning, the classes in the morning will be cancelled.
 - When the operation has not been re-started as of 10 a.m. in the morning, the classes in the afternoon will be cancelled.
- ⑤The above timing to judge the class cancellation is only as a guide, and it could be significantly earlier or later depending on the situation related to announcement of the Emergency

Warning or Warning.

- ⑥The make up class associated with cancelled class will be held on the reserved date designated for each quarter.
- ⑦When class will be cancelled, all of extracurricular activities will be prohibited.
- ⑧In the event of above ①, both classroom lecture and online lecture will be cancelled.
- ⑨In the case of above ② to ④, where class were cancelled, classroom lecture shall be cancelled but online lectures shall be basically held as scheduled.
However, when the instructor cannot give the lecture, it may be cancelled.

(6) What to do when train/bus services are suspended or during infection control in schools, or at the death of student's

When you cannot attend the class due to the below reasons, you can submit "Absence Report for specific reason" to the instructor of the class to avoid the treatment as an absence and/or obtain the right to have make-up examination depending on the situation.

- ①When you could not attend the class due to the non-operations of the transportation you use to commute to TUAT. (excluding online class)
- ②When you could not attend the class because the face-to-face lecture directly followed by an online lecture or vice versa and did not allow you travel to the place to take the class in time.
- ③When you could not attend the class because you acquired the infection which is subject to suspension order under Regulation for Enforcement of School Health and Safety Act or any other reason for the prevention of the infections from spreading.
Provided however, the educational arrangement for standing by at home for the prevention of infection from spreading will be done only for face-to-face lectures.
- ④When you could not attend the class because your relative in third degree of kinship has passed away and you attended the funeral, mourning period, or other required event related to the death of the relative.

You can download the Absence Report (template) and detailed instruction using the QR code to the right.

【Absence Report for Designated Causes】

http://www.tuat.ac.jp/documents/tuat/campuslife_career/campuslife/course/kesseki.pdf



(7) Abbreviation for Division/School, Courses, and Programs

Name of Division/School (Code for division) , Name of Course (Code for Course)		Name of Program	Code for Program
Graduate School of Agriculture (Master Course) (MA)	Agricultural Production Sciences course (AC)	Agricultural Production Sciences program	AP
		Bioregulation and Biointeraction program	CP
	Applied Biological Chemistry course (LC)	Applied Biological Chemistry program	LP
	Environmental Science and Natural Resources course (EC)	Natural Resources and Ecomaterials program	RP
		Environmental Science on Biosphere program	EP
		Natural Environment Conservation program	NP
	Agricultural Engineering and Agro-Food Informatics course (TC)	Agricultural Engineering and Agro-Food Informatics program	TP
	Sustainable Society course (SC)	Sustainable Society program	SP
International Innovative Agricultural Science course (IC)	International Innovative Agricultural Science program	IP	
Cooperative Division of Veterinary Sciences (Four-year doctoral course) (VD)			

(8) Student ID Number

You will use your Student ID Number for Registration Sheet, Examination Paper, Requests for the issuance of various certificates and others.

Student ID number is 8-digit number to be assigned as follows.

2	1	5	*	*	#	#	#
(Year of Admission)		(Code for Graduate School of Agriculture)	(Code for Course and Program)		(Numbers in each Course or Program)		

* (Code for Course and Program)			
Agricultural Production Sciences course	Agricultural Production Sciences program		: 11
Agricultural Production Sciences course	Bioregulation and Biointeraction program		: 12
Applied Biological Chemistry course	Applied Biological Chemistry program		: 13
Environmental Science and Natural Resources course	Natural Resources and Ecomaterials program		: 14
Environmental Science and Natural Resources course	Environmental Science on Biosphere program		: 15
Environmental Science and Natural Resources course	Natural Environment Conservation program		: 16
Agricultural Engineering and Agro-Food Informatics course	Agricultural Engineering and Agro-Food Informatics program		: 17
Sustainable Society course	Sustainable Society program		: 18
International Innovative Agricultural Science course	International Innovative Agricultural Science program		: 19
Cooperative Division of Veterinary Sciences (Four-year doctoral course)			: 01

Student ID number for the student whose admission year is 2021 will be as follows.

Agricultural Production Sciences course	Agricultural Production Sciences program	:	21511001~
Agricultural Production Sciences course	Bioregulation and Biointeraction program	:	21512001~
Applied Biological Chemistry course	Applied Biological Chemistry program	:	21513001~
Environmental Science and Natural Resources course	Natural Resources and Ecomaterials program	:	21514001~
Environmental Science and Natural Resources course	Environmental Science on Biosphere program	:	21515001~
Environmental Science and Natural Resources course	Natural Environment Conservation program	:	21516001~
Agricultural Engineering and Agro-Food Informatics course	Agricultural Engineering and Agro-Food Informatics program	:	21517001~
Sustainable Society course	Sustainable Society program	:	21518001~
International Innovative Agricultural Science course	International Innovative Agricultural Science program	:	21519001~
Cooperative Division of Veterinary Sciences	(Four-year doctoral course)	:	21501001~

Fall Students' last 3 digits of their ID will start either 501 or 701 depending on the classification of admission.

(Example) Student ID number who entered to International Innovative Agricultural Science course International Innovative Agricultural Science program in October 2021 will be a number starting 21519501 or 21519701.

(9) Notification to students

- Notification to the student from Fuchu Student Support Office, Educational Affairs Section I, and Educational Affairs Section II (collectively "Educational Affairs Section" in this General Information for Studies and Course Description) and other university will be basically posted to the Web bulletin board.
- When notification to an individual student will be required, we will send an email to the student's email address assigned by TUAT.
- **Please confirm the Web bulletin board and inbox of your student email address at least once a day.**

1) Web bulletin board

It can be accessed from outside of the Campus. It is divided into plural tabs by information categories (**On smartphone switch the tab using the menu at the upper right corner**). Please access using the below URL or QR code.

【Academic affairs】

<http://t-board.office.jskrtf.com/A/menu.php#Boar>



【Campus Life】

<http://t-board.office.tuat.ac.jp/A/menu.php#Buss>



- ◆[Academic affairs] tab shows notifications regarding, cancellation or change in schedule of class, certification, overseas education, language training, class and unit.
- ◆[Campus Life] tab shows notifications regarding scholarship, tuition waiver, job application, extracurricular activities, and other information related to student life as a whole.
- ◆Besides the above, there are [Lost & Found] tab listing the lost properties, and [Archived Information] tab which archives previous notifications.

〈How to Use〉

In default, all types of notification will be displayed. You can narrow it with your division and grade, and search key word or by category.

When you enter your program and grade in [所属のデフォルト条件 (default setting for affiliation)] on the Menu screen, your screen will be customized for your division and grade. However, we do not recommend using this feature as you may miss important notification.

2) Bulletin board on the main building

Notification which cannot be posted to the Web bulletin board will be posted on the bulletin board placed in front of the Student Support Center at the first floor of the main building.

3) Student Mail Address assigned by TUAT (TUAT-ID@st.go.tuat.ac.jp)

Summons or notifications to an individual student will be sent to the e-mail address assigned to each student by the University. If you have any question about TUAT intra network, including your e-mail address and/or password, please contact to Information Media Center.

【URL for Information Media Center】

<https://sites.google.com/a/go.tuat.ac.jp/imc/>



(10) Office Hour for Educational Affairs Section

Educational Affairs Section can answer your questions on your study and process your registration. Office hour for Educational Affairs Section is as follows.

Office hour (Weekday, Saturday and national holiday on which class will be held) 8:30 a.m.
- 5:15 p.m.

Please note that office hour is different from class hour. Office will be congested during the break time between classes. If you come to the office during the class period when you do not have a class, it will be smoother.

(11) University Web page

University web page also releases the information related to Campus Life.

【URL of University web page】

[/en/campuslife_career/](#)

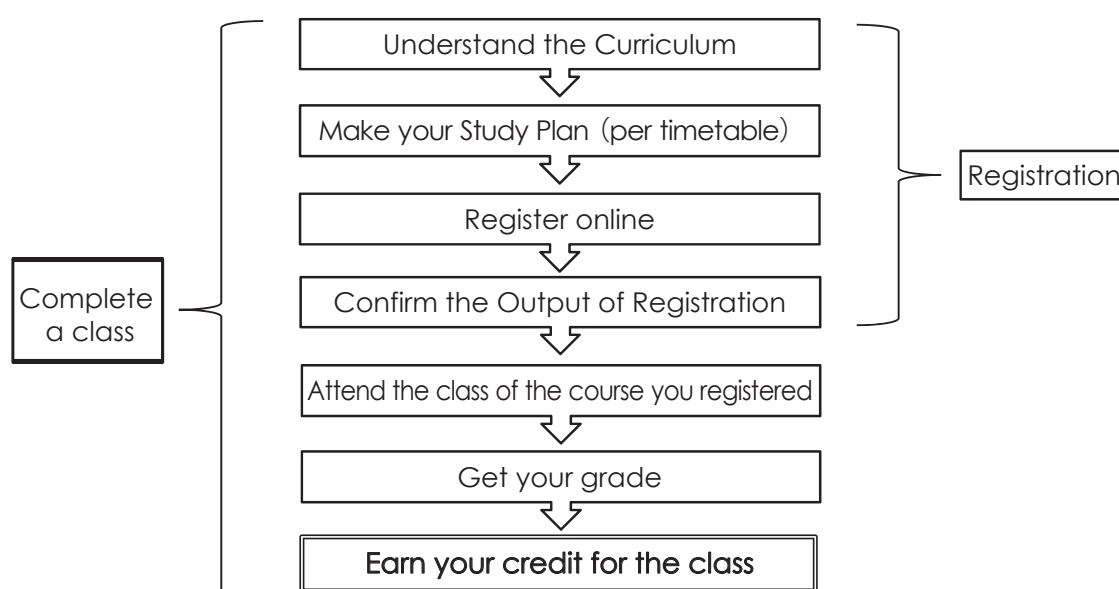


II. Registration Process

1. Basic concepts

(1) What is "Complete a class"

"Complete a course" means to learn and complete the specified learning course including all process flow from "registration" to "acquisition of credit." "Registration" is a process to enroll the course which each student wish to take according to the rule specified by the Graduate School of Agriculture, and then "Confirm the Registration Output" during the Period for confirming or correcting registration at each student's responsibility. If you have not registered the class, you will not acquire any credit even if you attend the class.



(2) Registration Period

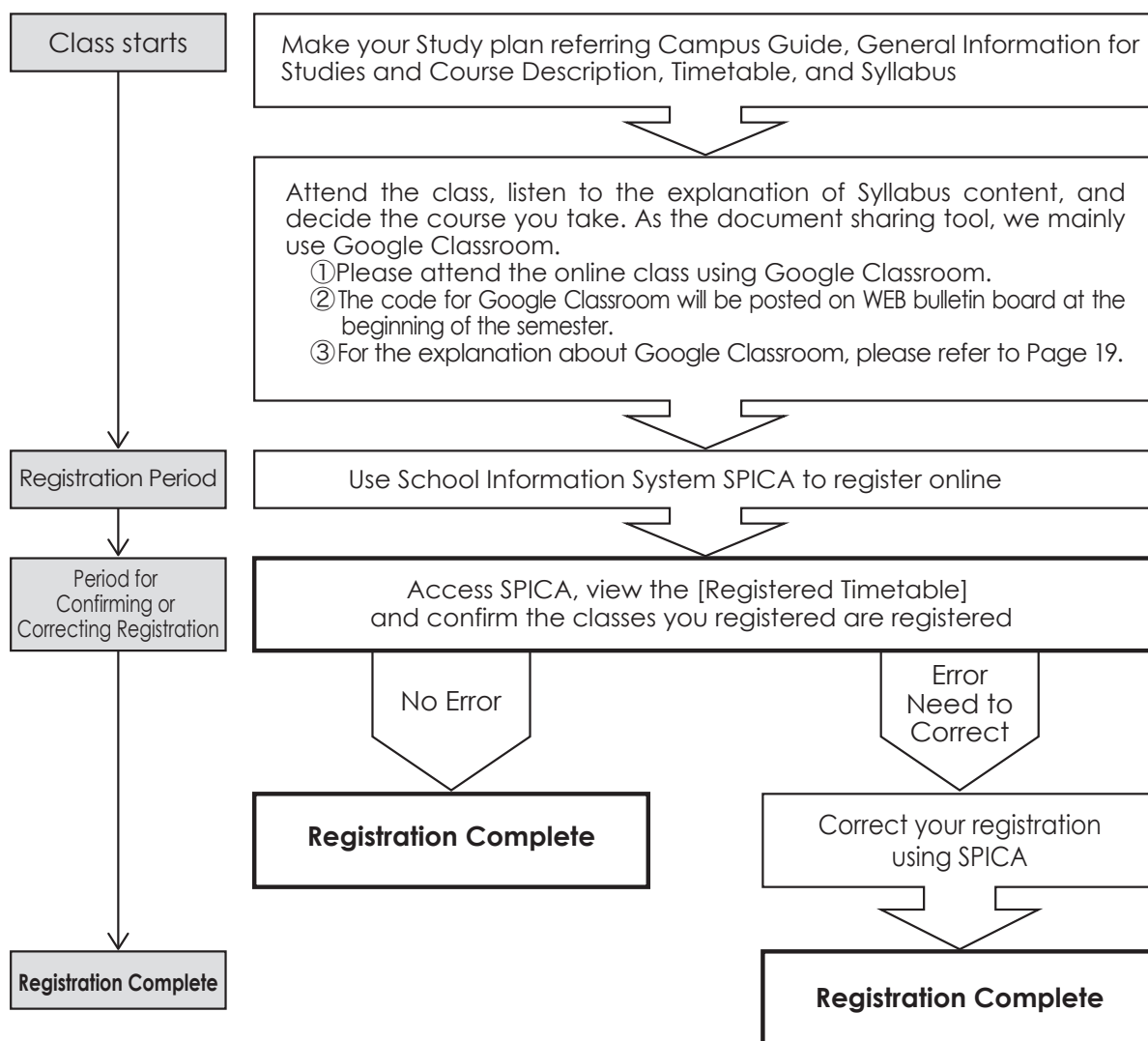
The registration period will be as follow. Please ensure to confirm the specified Registration Period which will be posted on web bulletin board.

	Quarters to Register	Type of Class	Registration Period	Period for Confirming or Correcting Registration
Spring Semester	1st and 2nd quarters	<ul style="list-style-type: none"> • Regular class • Full year class • Intensive class • Teacher-Training class 	2 weeks from the start of the class in 1st quarter	1 week following the Registration Period in 1st quarter
Fall Semester	3rd and 4th quarters	<ul style="list-style-type: none"> • Regular class • Intensive class • Teacher-Training class 	2 weeks from the start of the class in 3rd quarter	1 week following the Registration Period in 3rd quarter

※ Please **ensure** to confirm that there is no omission or error in your registration output during Period for confirming or correcting registration. It is important to check this because credits are not given due to the error in registration.

(3) Registration Process

Please register in the following process.



(4) Enrollment Request to take the course for other divisions

You can take the class in other division if you get the permission from the instructor of the class.

If you want to take the class, please submit the “Enrollment Request” (See below) to the instructor of the class. For online classes, please get the permission of the instructor of the class via emails. For those courses you obtained the permission to enroll, make web registration.

(担当教員提出用) 教員各位:履修を許可する場合は受理し、授業終了まで保管下さい。

令和 年度 前期 / 後期		他学府科目履修願				
時間割番号	履修科目	単位数	履修時間帯	受講学科年次	担当教員名	
			曜日	専攻		
			時限	年次		
学籍番号 () 氏名		専攻	年度入学	年次		

東京農工大学農学府

(5) Note on Registration Process

- ①Registration is the most important process to determine one year or half year study plan and impact to your graduation. Please carefully read and understand the General Information for Studies and Course Description, Bulletin board, and hands out at the guidance, and ensure to complete your registration during Registration Period. Except for classes, No registration will be granted after the Registration Period.
- ②The process of **Confirming and/or Correcting Registration** is extremely important. Requested class may not be registered due to your mistake or system error. There is the period to fix these errors and confirm and correct registration. Please ensure to confirm that the course you requested have been correctly registered during the Period for Confirming or Correcting Registration. **If you have not registered the course, you will not earn the credit (s) for the course even if you have attended the class and passed the examination.**
- ③You cannot duplicate registration. (Registration more than 1 course to be held in one identical class period. Generally, it is not possible to make duplicate registration even if you do not have to attend the class per class timetable by utilizing on-demand distribution or online classes.
- ④You cannot make re-register the courses you have already acquired the credit.
- ⑤Please take the courses appropriate for your grade in right order referring to the relevant course curriculum and class timetable.
- ⑥If you are not sure, consult with the support instructor for each division or program at your earliest convenience.
- ⑦**Student in the year of graduation may not take the course to be started in 4th quarter of the graduation year (Students graduate in September, may not take the courses that starts in 2nd quarter) .**

2. Examination and Grade

(1) Examination

1) Regular examination

“Regular examination” is basically scheduled at the end of the quarter and academic year, some courses have mid-term examination. Student who could not take the test with due cause such as sickness may take additional test and who has failed in the first test may take makeup exam.

2) Examination Rule

Student will take the examination earnestly and no cheating will be allowed. When any cheating will be discovered, the student will be suspended as of the discovery of such act, and **all credits taken in the Spring Semester or Fall Semester will be invalidated pursuant to 2nd or 3rd paragraph of Article 15 of Rule for Tokyo University of Agricultural and Technology and will be subject to relevant disciplinary action pursuant to the rule.**

- ①Unless otherwise instructed, students shall enter to the designated classroom 5 - 10

minutes before the start of the examination.

- ② Unless otherwise instructed, students shall take the designated sheet to take the test.
- ③ All of your belongings other than necessary for the examination shall be placed where the test proctor instructs.
- ④ Power off the mobile phone and put in your bag.
- ⑤ Ensure to place your Student ID Card on your desk. Please make sure to carry your student ID card with you. The examination may be invalidated if you do not have your student ID card with you.
- ⑥ During examination, do not rent or borrow tools of writing.
- ⑦ During examination, do not go out of the room without permission of test proctor.
- ⑧ During examination, do not make noise or any other things that bother other students having test.
- ⑨ For the first 30 minutes after the start of the test, do not leave the room.
- ⑩ Generally student who has arrived late after 30 minutes has passed will not be allowed to take the test. However, depending on the situation, it may be allowed. So please follow the instruction of the class teacher.
- ⑪ Please confirm that you have enter the division, admission year, student ID number, and full name on the examination paper. Paper without the information may be invalid.
- ⑫ Unless otherwise instructed, at the end of the examination, or when you have finished with your answer sheet before that, you may place your answer sheet on the teacher's desk or pass it directly to the test proctor and leave the room quietly. Please do not leave the answer sheet at your desk.
- ⑬ Do not bring back the answer sheet.
- ⑭ Only registered examination taker may enter the test room.

(2) Grading system

You will be notified with your grades for Spring and Fall Semester respectively through our school information system "SPICA."

The grades for the Spring semester will be notified in the mid of September, while the grade for the Fall semester will be notified in the mid of March (for graduating students, the Fall semester grades will be released in the mid of February) . A Specific date will be posted on the bulletin board. Please review your grade and confirm the courses you earned credit and use them for your reference to make your study plan for the next semester.

For your grade for each quarter, please use your computer to log in to SPICA and confirm. It is prohibited to print it out using Automated Certificate Issuance System.

1) Grading Criteria

Five-grade evaluation consists of "S" (for 100 - 90 points) , "A" (for 89 - 80 points) , "B" (for 79 - 70 points) , "C" (for 69 - 60 points) and "D" (for 59 - 0 points) . "S," "A," "B," and "C" is pass and

credit will be given. "D" is failure (including abandoned) which will be recorded in the grade lists but will not appear in the academic transcript.

GPA and grade list and corresponding record on academic transcript

Grade		Evaluation Points	Achievements	GPA	Record on Score list	Record on academic transcript
Pass	S	100 - 90 points	Exceeded the learning goals.	4	Yes	Yes
	A	89 - 80 points	Learning goals were fully achieved.	3	Yes	Yes
	B	79 - 70 points	Learning goals were achieved.	2	Yes	Yes
	C	69 - 60 points	Learning goals were mostly achieved.	1	Yes	Yes
Failure	D	59 - 0 points	Learning goals were not achieved.	0	Yes	No
Credit Transfer	Granted	Granted the transfer of credits (such as already earned credit before admission)		No	Yes	Yes

✘ GPA will not appear in score list nor academic transcript. If necessary, calculate it by yourself.

2) Grade Confirmation System

There is a grade confirmation period for each Spring semester and Fall semester. If you have any question regarding your grade, please use the designated sheet and submit it to the Educational Affairs Section. Detailed information will be posted in early September for Spring semester and early March for Fall semester (for the students who will graduate in March, early February) .



III. About various procedures

1. Changing your status in school register (leave, withdrawal, etc.)

(1) Various petition form

Various petition forms are available from and can be submitted to Educational Affairs Section.

Process of petition may take time so please come to the Educational Affairs Section for consultation sufficiently in advance.

	Due date	Remarks
Petition for leave	By 15th day of the previous month	It requires signature and seal by your cosigner and signature of your instructor. For leave due to sickness, attach medical certificate by a doctor. If you leave from the mid of a semester, the procedures for tuition will be changed, so please consult with administration office.
Petition for Reinstatement	By 15th day of the previous month	It will be required when you return to school before the expiration of the Leave period due to the reason for leave has been extinguished.
Petition for Withdrawal	Withdrawal as of March 31st By March 15th Withdrawal as of September 30th By September 15th	It requires signature and seal by your cosigner and signature of your instructor. For withdrawals in the mid of semester, you still need to pay for the tuition for such semester.
Petition for Study Abroad	By 15th day of the month two months prior to the month of your departure	Since there are other documents to be submitted, contact administration office.
Petition for Transfer to other Division or Program	Mid of January	It requires signature and seal by your cosigner and seal by your support instructor. Detailed procedures will be posted in December, so please check it, and consult with the support instructor of your program.
Petition to apply to other university	Before applying to other university	It is required to obtain the signature and seal by your cosigner and support instructor of your course and program. You need to submit a report when you re-apply for TUAT.

(2) Notes

- ① If you have to leave or withdraw from TUAT, please consult with board of education of your course and program as well as the board of campus life in advance.
- ② The period for leave is limited up to 2 years in total for master course and up to 4 years in total for four-year-doctoral course. When the designated period for leave or stay enrolled has lapsed, you will be expelled from TUAT. For other treatment regarding leave, please refer to TUAT rule.
- ③ If you apply for other University and take entrance examination while stay enrolled to TUAT, please talk to board of education of your program, and submit "Petition to apply for other university." (including having the entrance examination of TUAT for re-admission) Please immediately report the results of your entrance examination to the Educational Affairs Section and if you enter to other university, please submit "Petition for Withdrawal" (including re-admission to TUAT) .

2. Issuing of Certificate

(1) Automated Certificate Issuance System

You can use the Automated Certificate Issuance System placed at Fuchu Student Support Office, Student Support Section to issue following certificates. (Office hour: Weekday, Saturday, and national holiday on which class will be held, 8:30 - 17:15)

	How to issue	Delivery		Remarks
		Japanese	English	
Student passenger fare discount certificate	Auto Issuer	Same day	—	Available while you are in school
Certificate of enrollment	Auto Issuer	Same day	Same day	Available while you are in school (If you are in leave, it won't be issued.)
Academic transcript	Auto Issuer	Same day	Same day	Records until the previous semester will be listed. (Grades already disclosed will be listed.)
Certificate of health examination	Auto Issuer	Same day	—	Available while you are in school (provided you have undergone the medical checkup and confirmed no re-examination required.)
Certificate of expected graduation	Auto Issuer	Same day	Same day	Available in mid-May of the year of graduation or later.

- ※ For other certificates, please refer to Campus Guide.
- ※ Regarding the procedure to issue certificates after you have graduated or left TUAT, please refer to University web page 《For Alumni → How to Request a Certificate of Graduation》

IV. Course Registration FAQ

We made the list of frequently asked questions at Educational Affairs Section and posted it to the University web page as "Course Registration FAQ." Please refer to it.

TUAT University web page Home > Campus Life & Career Support >
 Campus Life > Course Information
http://www.tuat.ac.jp/documents/tuat/campuslife_career/campuslife/course/nougakubu_risyu_qa.pdf



V. Access to Sports facilities and Campus map

1. Access to Facilities

(1) Sport Facilities

TUAT has sports facilities including playground, indoor gymnasium facilities, tennis courts, and golf driving range as well as welfare center for student activities that can be used for interaction and recreation of students. These facilities are available for classes and extracurricular activities and for the use of student in general.

Each facility has its own rule for use. For details about the procedures to use these facilities, please refer to Campus Guide "Campus Life Related Facilities".

TUAT web page: Home>Campus Life & Career Support>Campus Life>
Campus Guide
http://www.tuat.ac.jp/campuslife_career/campuslife/binran/



(2) Libraries

Both Fuchu and Koganei campuses have library respectively, and various book, magazines, electric journal, and database are available. Regarding opening hour and procedures for use, please refer to the webpage for the library.

TUAT web page: Home>Campus Guide>Facilities>Library
<http://web.jskrtf.com/~biblio/English>



2. Fuchu Campus map, classroom map

To locate each building and classrooms in Fuchu campus, please refer to the below.

Fuchu Campus map
<https://www.jskrtf.com/en/outline/overview/access/fuchu/>



Classroom Locator
http://www.tuat.ac.jp/documents/tuat/campuslife_career/campuslife/course/fuchu_kyoshitsumap.pdf



VI. About SPICA and Google Classroom

1. SPICA (school information system login portal)

SPICA (school information system login portal) is a system where you can register your course and inquiry for your grade via internet. Following services are available via SPICA.

- Online course registration
- Timetable confirmation
- Syllabus lookup
- Check for notifications
- Answer to class survey.
- Viewing grades online (※Internal access only)
- Viewing the student registry, etc. (※Internal access only)

Basically, registration of the courses can be exclusively done from SPICA, so please check the below URL and ensure to be familiar with how to access and operate SPICA in advance.

【How to Access】

Campus Life & Career Support > Campus Life > How to Use the SPICA School Information System > School information system login
<https://spica.gakumu.jskrtf.com/portal2/>



【How to Operate】

Campus Life & Career Support > Campus Life > How to Use the SPICA School Information System > Guides
/documents/tuat/campuslife_career/campuslife/spica/manual_g_english.pdf



For your first log-in, please use the ID and Password you have received at the orientation. You may change your password via the Information Media Center's "Salut" request system. After you changed your password, keep it securely and in the event, you have forgotten it, please have it reissued at Information Media Center (at 1st floor of Koganei Library or 2nd floor of Building 2 at Fuchu campus) .

【Change Password】

Submission and Administration System "Salut" <https://salut1.ecs.jskrtf.com/>



2. Google Classroom (Document Sharing tool)

Google Classroom is a simple LMS (Learning Management System) included in G Suite. You will get the information about each class from classroom or WEB bulletin board. You can attend the class by logging in to Google Service. In order to attend the class, you need to obtain "class code" from your instructor or, be invited by your instructor to the class. If you have the class code, you can attend the class from Google Classroom page.

【How to Access】

<https://classroom.google.com/>

※Please enter your full email address starting from "TUAT-ID" including the letters after @ into [Login ID].

※For log-in please use your email address either <TUAT-ID>@go.jskrff.com or <TUAT-ID>@st.go.tuat.ac.jp.



【How to Operate】

Information Media Center>Services>Online Class Tool>

4.1. Google Classroom>Reference



3. Moodle (Learning Management System)

Moodle is a learning management system (LMS) provided by Information Media Center.

Please ensure to be familiar with how to access and operate Moodle in advance because at some classes you will be required to use Moodle to receive documents, submit report assignment, and take test. For Moodle, please use the same ID and Password for SPICA.

【How to Access】

Campus Life & Career Support>Campus Life>Educational Support and Consultation>Moodle Learning Management System

<https://lms-2.jskrff.com/moodle>



【How to Operate】

From the above URL, use your SPICA-ID to log in and click in the order of Home>Current Student Manual>Register Me to open the Operation manual.

**Master Course,
Graduate School of
Agriculture**

VII. Requirements for Graduation and Registration Process

You must consult with your Advisor to develop your study plan in concert with your research plan and choose the courses to register by referring "Timetable for Graduate School of Agriculture," "Course Information for Graduate School of Agriculture," and "Education Rule for Graduate School of Agriculture" in "Campus Guide," and complete the registration of courses during a specified period.

1. Requirements for Graduation

You have to enroll for the required number of years (two years), acquire the specified number of credits as below pursuant to the academic course, receive research guidance, and pass a master thesis screening and final examination. (See TUAT rule Article 73)

(1) Minimum number of credits required for graduation

The minimum number of credits required for graduation is as below.

For the academic requirement for graduation, please refer to IX. Course Curriculum and Course Content (Page 33 -) .

Minimum number of credits for graduation

【General study subjects, General exercise subjects, Special Field subjects, Reinforcing subjects, Courses in other faculties】 18 credits or more in total				
【General study subjects】 (4 credits or more)			【General exercise subjects】 (2 credits or more)	【Special Field subjects】 (4 credits or more)
Overviews of your course (1 credit or more)	Overviews of other course (1 credit or more)	Special lecture for 21st century's agriculture science (1 credit)	International Research Presentation I or II (1 credit)	Subjects of your course (2 credits or more)

【Thesis-related subjects】 (12 credits)		
【Special research】	【Special exercise】	
Group A or B	"Special Research in Agricultural Science I or II"	Special exercise for Publication Review I or II
Special Research in Agricultural Science (6 credits)	Special Exercise in Agricultural Science (4 credits)	Special exercise for Publication Review (2 credits)

※Earn 30 credits or more from General study subjects, General exercise subjects, Special Field subjects, and Reinforcing subjects provided however, up to 4 credits from Reinforcing subjects and up to 2 credits from Courses in other faculties can be included.

※To complete the master course, you have to complete the programs to which you belong to. For the completion requirements for each program, please refer to pages that follow.

※For Thesis related course, please consult with your Advisor before registering it.

※If you take the Teacher-Training Course, please refer to page 47.

(2) About Reinforcing subjects (for integrated education) and courses in other departments

Integrated education is an education system provided by the cooperation of Faculty of Agriculture and Graduate School of Agriculture to obtain higher educational effect. Only when your Advisor agrees that it would help your learning, you can take courses for the faculty as "Reinforcing subjects" and include up to 4 credits of them to your credits for graduation.

In the same way, only when your Advisor agrees that would help your study, you can take the master's class courses for graduate school of Engineering or Bio-Applications and Systems Engineering Master Course and include up to 2 credits of them to your credits for graduation.

If you wish to take those courses, please consult with your Advisor and submit "petition for course registration" during specified Registration Period.

You can take the credit transfer open courses in the graduate schools of affiliated universities, however, those credits cannot be included in your credits for graduation. Earned credits will be recorded in your academic transcript.

2. About the Completion of your Program

For graduation of master course, you need to complete the study of the program to which you belong.

Generally, only one program can be completed. However, if you satisfy certain conditions listed in “ (2) Completion of double programs” on the next page, you can complete another program in addition to the program you belong to.

(1) Requirements for the completion of the program

Requirements for completion for each program are as below.

Agricultural Production Sciences course
Agricultural Production Sciences program (AP)

Subjects	Required credit (s)
Overview for Agricultural Production Sciences I Overview for Agricultural Production Sciences II	1 credit or more from this group
Agro-Environment Science I Agro-Environment Science II Plant Production Science I Plant Production Science II Animal Production Science I Animal Production Science II Special Lecture on Agricultural Production Sciences I Special Lecture on Agricultural Production Sciences II Special Lecture on Agricultural Production Sciences III	2 credits or more from this group
Total	3 credits or more

Agricultural Production Sciences course
Bioregulation and Biointeraction program (CP)

Subjects	Required credit (s)
Overview for Agricultural Production Sciences I Overview for Agricultural Production Sciences II	1 credit or more from this group
Bioregulation and Biointeraction I Bioregulation and Biointeraction II Bioregulation and Biointeraction III Bioregulation and Biointeraction IV Special Lecture on Agricultural Production Sciences IV	6 credits or more from this group
Total	7 credits or more

Applied Biological Chemistry course
Applied Biological Chemistry program (LP)

Subjects	Required credit (s)
Overview for Applied Biological Chemistry I Overview for Applied Biological Chemistry II	1 credit or more from this group
Biomolecular and Biomaterial Chemistry I Biomolecular and Biomaterial Chemistry II Physiological and Biological Chemistry I Physiological and Biological Chemistry II Science of Healthy Longevity I Science of Healthy Longevity II	4 credits or more from this group
Special Lecture on Applied Biological Chemistry I Special Lecture on Applied Biological Chemistry II Special Lecture on Applied Biological Chemistry III Special Lecture on Applied Biological Chemistry IV Special Lecture on Applied Biological Chemistry V Special Lecture on Applied Biological Chemistry VI	2 credits or more from this group
Total	7 credits or more

Environmental Science and Natural Resources course
Natural Resources and Ecomaterials program (RP)

Subjects	Required credit (s)
Overview for Environmental Science and Natural Resources I	Compulsory 1 credit
Ecomaterial Science I Ecomaterial Science II Functional Control of Natural Resources I Functional Control of Natural Resources II	4 credits or more from this group
Special Lecture on Environmental Science and Natural Resources I Special Lecture on Environmental Science and Natural Resources II Special Lecture on Environmental Science and Natural Resources III Special Lecture on Environmental Science and Natural Resources IV	4 credits or more from this group
Total	9 credits or more

Environmental Science and Natural Resources course
Environmental Science on Biosphere program (EP)

Subjects	Required credit (s)
Overview for Environmental Science and Natural Resources II	Compulsory 1 credit
Environmental Biology I Environmental Biology II Environmental Chemistry I Environmental Chemistry II	Compulsory 8 credits
Special Lecture on Environmental Science and Natural Resources V Special Lecture on Environmental Science and Natural Resources VI Special Lecture on Environmental Science and Natural Resources VII Special Lecture on Environmental Science and Natural Resources VIII	2 credits or more from this group
Total	11 credits or more

Environmental Science and Natural Resources course
Natural Environment Conservation program (NP)

Subjects	Required credit (s)
Overview for Environmental Science and Natural Resources I	Compulsory 1 credit
Ecosystem Conservation I Ecosystem Conservation II Ecosystem Conservation III Forest Environment Conservation I Forest Environment Conservation II Forest Environment Conservation III Special Lecture on Environmental Science and Natural Resources IX Special Lecture on Environmental Science and Natural Resources X	8 credits or more from this group
Total	9 credits or more

Agricultural Engineering and Agro-Food Informatics course
Agricultural Engineering and Agro-Food Informatics program (TP)

Subjects	Required credit (s)
Overview for Agricultural Engineering and Agro-Food Informatics I Overview for Agricultural Engineering and Agro-Food Informatics II	1 credit or more from this group
Rural and environmental engineering I Rural and environmental engineering II Rural and environmental engineering III Biological and agricultural engineering I Biological and agricultural engineering II Biological and agricultural engineering III	6 credits or more from this group
Total	7 credits or more

Sustainable Society course
Sustainable Society program (SP)

Subjects	Required credit (s)
Overview for Sustainable Societies I Overview for Sustainable Societies II	1 credit or more from this group
Human Coexistence I Human Coexistence II Social Studies in Environment I Social Studies in Environment II Economics of Food and Environment I Economics of Food and Environment II Economics of Food and Environment III Special Lecture on Sustainable Societies I	2 credits or more from this group
Total	3 credits or more

International Innovative Agricultural Science course
International Innovative Agricultural Science program (IP)

Subjects	Required credit (s)
Overview for International Innovative Agricultural Science I Overview for International Innovative Agricultural Science II	1 credit or more from this group
International Environmental Rehabilitation and Conservation I International Environmental Rehabilitation and Conservation II International Biological Production and Resource Science I International Biological Production and Resource Science II International Life and Biological Chemistry I International Life and Biological Chemistry II International Rural Development and Rural Area I International Rural Development and Rural Area II International Applied Animal Science I International Applied Animal Science II Special Lecture on International Innovative Agricultural Science I	6 credits or more from this group
Total	7 credits or more

(2) Completion of double programs

If you satisfy the below conditions you can complete another program in addition to the program you belong to. When you complete double programs, both of them will be listed in your diploma.

Requirements to complete double programs

- 1) During the Registration Period of the Spring Semester in your 1st or 2nd year, get the permission of your advisor and submit the "Petition to register other program in Graduate School of Agriculture" to Educational Affairs Section.
- 2) Earn the credits required for the completion of another program you wish to complete.
- 3) For Special Research among Thesis related courses as compulsory elective courses, take the combination of "Research expansion in Agricultural Science I" and "Research expansion in Agricultural Science II" (for Fall student II and IV of the same courses) taught by sub advisor for another program you wish to complete.

※ Regarding the study of thesis related course, refer to page 29, too.

3. Registration method

(1) Registration method for the courses which cannot be registered online

While registration should be done through SPICA, for those courses which are marked "no online registration," you cannot make their registration via SPICA. Please enroll by following the procedures designated for each course.

【Introduction for Science of Agriculture and Technology】

The credit for this course will be granted by taking any one of the designated courses for Department of Food and Energy Systems Science (BASE) and complete. For the list of the designated courses, please refer to syllabus.

Registration Period: The Registration Period of the semester when the subject will be held.

Registration Method: Fill in the "Subject transfer notification" available from the Educational Affairs Section and obtain the approval of the course instructor and submit it to Educational Affairs Section during Registration Period.

【Subject Exercise for Agricultural Research】

The credit for this subject will be granted by presenting your own study results at an academic conference and listen to other presentations related to your study. For details, please refer to syllabus and confirm with your advisor about which academic conference will be qualified.

【Practical Exercise for Agricultural Research】

This is an activity, such as study abroad for the research of master thesis, joint study, internship at corporations or research institutes in and out of the country, or study tour held by each course or program. The credit for this subject will be granted by preparing in advance, create the report, and present it. For details, please refer to syllabus and confirm with your advisor about which activities will be qualified.

The enrollment to Subject Exercise for Agricultural Research and Practical Exercise for Agricultural Research can be done any time before or after the Registration Period.

Documents required for enrollment and the deadline is on the next page.

List of Documents required to enroll "Subject Exercise for Agricultural Research" and "Practical Exercise for Agricultural Research" (Student in Agricultural Graduate School)

Course	Required Documents	Submit to Deadline	Remarks
Subject Exercise for Agricultural Research (Presentation at Academic conferences, etc.)	<p>[Domestic]</p> <ul style="list-style-type: none"> • Application for Course Registration (For Off-campus activities) ※¹ • Notification on Off-campus study - domestic (Attachment A-1) 	Educational Affairs Section I 1 week before the date of study	<p>※1. For any questions about your registration and credit, please consult with Educational Affairs Section I.</p> <p>※2. If you attend any of Overseas Study Program of TUAT or any Partner Universities, please submit this document to Registration Section II together with "Petition for Study Abroad," by 20th day of the month two months prior to the month of your departure.</p>
	<p>[Abroad]</p> <ul style="list-style-type: none"> • Application for Course Registration (For Off-campus activities) ※¹ • Notification of Going Abroad (Attachment B) • Commitment Form for Going Abroad • Copy of Overseas travel insurance • Petition for Study Abroad ※² 	Educational Affairs Section II 2 weeks before your departure ※ ²	
Practical Exercise for Agricultural Research (Overseas study for Master thesis research and others)	<ul style="list-style-type: none"> • Application for Course Registration (For Off-campus activities) ※¹ • Notification of Going Abroad (Attachment B) • Commitment Form for Going Abroad • Copy of Overseas travel insurance • Petition for Study Abroad ※² 	Educational Affairs Section II 2 weeks before your departure	<p>※1. For any questions about your registration and credit, please consult with Educational Affairs Section I.</p> <p>※2. If you attend any of Overseas Study Program of TUAT or any Partner Universities, please submit this document to Educational Affairs Section II together with "Petition for Study Abroad," by 20th day of the month two months prior to the month of your departure.</p>
Practical Exercise for Agricultural Research (Internship for domestic and foreign companies and associations)	<p>[Domestic]</p> <ul style="list-style-type: none"> • Application for Course Registration (For Off-campus activities) • Notification on Off-campus study - domestic (Attachment A-1) • Request Form for Internship Application • Report on scheduled Internship • Report on completed Internship • Request Letter ※¹ <p>[Abroad]</p> <ul style="list-style-type: none"> • Application for Course Registration (For Off-campus activities) • Other documents requested (Please consult with Educational Affairs Section I) 	Educational Affairs Section I 1 month before the activity	<p>※1. If the company or organization you will be accepted as intern or trainee requests specific format or items to be written on the Request Letter from University, please draft the Request Letter according to the requirement and attach it. If there is no specific format, no need to attach the draft as we will use TUAT template.</p>
Practical Exercise for Agricultural Research (If you attend the Study tour offered by your Course or Program)	<ul style="list-style-type: none"> • Application for Course Registration (For Off-campus activities) • Notification on Off-campus study - domestic (Attachment A-1) ※¹ 	Educational Affairs Section I 1 week before the date of study	<p>※1. If the Course or Program instructor in charge of the training will collect the documents to submit, follow the instruction by such instructor.</p>

- Above are the necessary documents for registration process.
- Your advisor or instructor in charge of training may separately request you to submit planning or presentation materials, reports, and/or completed report.

※ For the template, please see XVIII on page 50. Refer to the form and templates on the web bulletin board and download it.

※ If there will be any changes, we will notify you on web bulletin board.

【International Research Presentation I & II】

The credit for this subject will be granted by making interim presentation as a preparation to make master thesis based on the results of Special Research or Research expansion in Agricultural Science. General orientation will be held in early October, and the attendance to the orientation is compulsory. The place and date and time for the general orientation will be posted to the WEB bulletin board by early September. You can earn 1 credit either for International Research Presentation I (Japanese) or International Research Presentation II (English) .

The schedule for each program will be posted on WEB bulletin board from time to time.

The enrollment to this subject will be done at the orientation, so no need to make separate registration.

(2) Registration of Thesis related courses

Thesis related courses have two courses of "Special Research" and "Special Exercise" and the registration itself shall be done via SPICA as other courses. However, you need to consult with your main advisor to decide the timing of the study, selection of courses and sub advisor.

Please note that the codes for timetable for registration are different depending on the program and advisor. (For details, please refer to page 43 - 46)

1) Special Research

Spring students shall register the courses in group A and Fall students shall register the courses in group B.

【Special Research in Agricultural Science I】 (For Spring students)

【Special Research in Agricultural Science II】 (For Fall students)

This is full year compulsory course to be offered by your main advisor. It is supposed to be studied in your 1st year but if your main advisor agrees that would be better for your study, you can change the year to take it. Please consult with your main advisor before making final decision.

【Special Research in Agricultural Science II】 Main advisor (for Spring students)

【Research expansion in Agricultural Science I】 Sub advisor (for Spring students)

【Research expansion in Agricultural Science II】 Sub advisor (for Spring students)

【Special Research in Agricultural Science IV】 Main advisor (for Fall students)

【Research expansion in Agricultural Science III】 Sub advisor (for Fall students)

【Research expansion in Agricultural Science IV】 Sub advisor (for Fall students)

This is compulsory elective subjects where you must complete 2 subjects out of 3. If your sub advisor involves significantly in your writing of master thesis, Spring students should take the combination of "Research expansion in Agricultural Science I" and "Research expansion in Agricultural Science II" and Fall students should take "Research expansion in Agricultural Science

III" and "Research expansion in Agricultural Science IV."

Otherwise, Spring students should take the combination of "Special Research in Agricultural Science II" and "Research expansion in Agricultural Science I" and Fall students should take "Special Research in Agricultural Science IV" and "Research expansion in Agricultural Science III."

2) **Special Exercise**

Spring students should take I and Fall students should take II.

【Special Exercise in Agricultural Science I】 (For Spring students)

【Special Exercise in Agricultural Science II】 (For Fall students)

【Special exercise for Publication Review I】 (For Spring students)

【Special exercise for Publication Review II】 (For Fall students)

Compulsory courses by Main advisor It is supposed to be studied in your 1st year but if your main advisor agrees that would be better for your study, you can change the year to take it. Please consult with your main advisor to make your final decision.

VIII. Application for master thesis screening/examination

Students must submit the application for master thesis screening/examination in accordance with the university regulation, "Master Thesis Screening Guideline for Graduate School of Agriculture TUAT." The schedule for screening/examination and the application form etc. will be available in late November for March graduation and in late May for September graduation. Please keep checking the notifications on bulletin boards, etc. for updates. Please refer to the screening criteria for master thesis on the University web page (Curriculum for Graduate School of Agriculture) .

Guideline for Master Thesis Screening - Graduate School of Agriculture TUAT

(Purpose)

Article 1. This Guideline aims at setting forth the necessary items regarding the screening of master thesis for the Graduate school of Agriculture in addition to those defined by TUAT rule, TUAT degree policy ("Degree policy") , and "Education Rule for Graduate School of Agriculture, TUAT".

(Application for the master thesis review)

Article 2. Student who applies for the thesis review, obtain the approval from advisor and submit it to the Dean of the graduate school by attaching the below application documents.

- | | |
|---|--------|
| (1) Application for Master Thesis review (Template 1) | 1 Copy |
| (2) Master Thesis | 1 Copy |
| (3) Abstract (Template 2) | 1 Copy |

(Deadline for Application)

Article 3. The deadline for application shall be a day in early February to be separately designated every year. For Fall students and the Spring students plan to graduate in September by shortening or extending their study period, the deadline shall be a day in early July to be a separately designated.

(Referral of the thesis review and selection of reviewers)

Article 4. Once the receipt of appropriate application for master thesis for review, the dean shall refer its review to the faculty council for the Faculty and graduate school of Agriculture ("Faculty Council") .

2. The Faculty Council appoints the reviewers pursuant to the Article 9 of the Degree Policy. In this case, one of the reviewers will be appointed as chief reviewer.

(Review of Master Thesis and Final examination)

Article 5. Reviewer shall carry out the master thesis review and final examination.

2. Final examination will be carried out by oral or writing tests mainly in the field of master thesis as well as in related subjects and specialized areas.
3. If necessary, professor (s) , associate professor (s) , and instructor (s) of the relevant program may join reviewers for the final examination.

(The report of the Review Results)

Article 6. Once the review of master thesis and final examination have been carried out, the chief reviewer shall submit the results of master thesis and final examination in

a report (template 3) through the head of program to the dean.

(Keeping Master thesis)

Article 7. The original of the master thesis passed the review shall be kept in the libraries of TUAT.

2. The abstract of the master thesis will be bound and entrusted to TUAT library to keep it available for review.

(Miscellaneous)

Article 8. Besides this document, there are separate rules to be applied to the application for review and storage of master thesis for Graduate School of Agriculture.

IX. Course Curriculum and Course Content

Course Category	Course	Credit (s)	Instructor () part-time instructor [] part-time instructor for contact	Timetable Code	Regular Course Period	
General study subjects	Special lecture for 21st century's agriculture science	◎1	Kato or other Instructors in the department	cf0014	First Quarter	R3 Japanese • R4 English
	Overview for Agricultural Production Sciences I	1	Natsume and other CP Instructors	cf0001	Second Quarter	Intensive
	Overview for Agricultural Production Sciences II	1	Shinmura and other AP Instructors	cf0002	Third Quarter	
	Overview for Applied Biological Chemistry I	1	Nomura and other LC Instructors	cf0003	Second Quarter	Intensive
	Overview for Applied Biological Chemistry II	1	Yamagata and other LC Instructors	cf0004	Second Quarter	Intensive
	Overview for Environmental Science and Natural Resources I	1	Nakaba and other RP Instructors	cf0005a	First Quarter	Intensive
			NP Instructors	cf0005b	First Quarter	
	Overview for Environmental Science and Natural Resources II	1	EP Instructors	cf0006	Third Quarter	
	Overview for Agricultural Engineering and Agro-Food Informatics I	1	Chousa and Yamashita	cf0007	Second Quarter	
	Overview for Agricultural Engineering and Agro-Food Informatics II	1	Tatsumi and Fukuda	cf0008	Fourth Quarter	
	Overview for Sustainable Societies I	1	Yoshida and other SC instructors	cf0009	Second Quarter	Intensive
	Overview for Sustainable Societies II	1	Nomiyama and other SC instructors	cf0010	Fourth Quarter	Intensive
	Overview for International Innovative Agricultural Science I	1	Gomi and other IC instructors	cf0011	First Quarter	in English
	Overview for International Innovative Agricultural Science II	1	Okazaki and other IC instructors	cf0012	Third Quarter	in English
	Introduction for Science of Agriculture and Technology	1	BASE instructors	cf0013	First Quarter	No online registration, held in JP and EN
	Multicultural communication and transmission	2	Tazaki	cf0015	Third Quarter	in English
	Advanced lecture of Green, Food, and Life science	1	GIR instructors, Yoshida	cf0016	Third Quarter	Intensive, in English
	Arts of Intercultural Communication	2	Instructor from Tokyo University of Foreign Studies	cf0017	First Quarter	in English
	Advanced lecture on Agriculture Science I	1	Instructor invited by IC	cf0018	Third Quarter	Intensive, in English
	Advanced lecture on Agriculture Science II	2	(kazuki Saito) [Katsura]	cf0019	First Quarter	Intensive, in English
Japanese I	2	Hongo	cf0020	Third Quarter	} Course for foreign students, not for credit for graduation	
Japanese II	2	Ito	cf0021	First Quarter		
General exercise subjects	Exercise for Methods of Agricultural Experimental design and Statistical Analysis I	1	(Fukano) [Toshiyuki Sato]	ce0001a	First Quarter	Intensive
			(Kozaki) [Miura]	ce0001b	First Quarter	Intensive
			(Okuda) [Akasaka]	ce0001c	First Quarter	Intensive
			(Kawamori) [Akasaka]	ce0001d	First Quarter	Intensive
	Exercise for Methods of Agricultural Experimental design and Statistical Analysis II	1	(Abe) [Toshiyuki Sato]	ce0002	Third Quarter	Intensive, in English
	Field and Laboratory Safety and Research Ethics I	1	(Shirabe) [Gomi]	ce0003	First Quarter	

Field and Laboratory Safety and Research Ethics II	1	(Shirabe) [Gomi]	ce0004	Third Quarter	Partially intensive, in English
Management and operation of intellectual property	1	(Tasaka) [Gomi]	ce0005	First Quarter	
Exercise for Spatial Information Analysis	1	(Iwao) [Yamashita]	ce0006	First and Third Quarter	Intensive, in English (open in 3rd quarter in even year)
Subject Exercise for Agricultural Research	1	Advisor	ce0007	Full year	No online registration
Practical Exercise for Agricultural Research	1	Advisor	ce0008	Full year	No online registration
International Research Presentation I	○1	Advisor	ce0009	Full year	No online registration (Japanese)
International Research Presentation II	○1	Advisor	ce0010	Full year	No online registration (English)
Exercise for Agricultural Science I	2	Instructors in IC	ce0011	Full year	Exclusive for double degrees
Exercise for Agricultural Science II	2	Instructors in IC	ce0012	Full year	Exclusive for double degrees
Exercise for Agricultural Science III	2	Instructors in IC	ce0013	Full year	Exclusive for double degrees
Exercise for Agricultural Science IV	2	Instructors in IC	ce0014	Full year	Exclusive for double degrees
Exercise for Agricultural Science V	2	Instructors in IC	ce0015	Full year	Exclusive for double degrees

※Regarding double degrees program, please refer to web bulletin board.

Course Category	Course	Credit (s)	Instructor () part-time instructor [] part-time instructor for contact	Timetable Code	Regular Course Period		
Special Field subjects	Agricultural Production Sciences course	Agro-Environment Science I	2	Otsu, Motobayashi, Sugimura	ac0001	First Quarter	
		Agro-Environment Science II	2	Sugihara, Osamu Tanaka, Ban	ac0002	Third Quarter	
		Plant Production Science I	2	Kanekatsu, Tetsuya Yamada	ac0003	First Quarter	
		Plant Production Science II	2	Okawa, Sakae Suzuki	ac0004	Third Quarter	
		Animal Production Science I	2	Katsuhiko Arai, Shinmura	ac0005	First Quarter	
		Animal Production Science II	2	Yokoyama, Tabunoki, Ito	ac0006	Third Quarter	
		Bioregulation and Biointeraction I	2	Kawaide, Hiraoka, Komatsu	ac0007	First Quarter	
		Bioregulation and Biointeraction II	2	Arie, Inoue, Kasahara	ac0008	Third Quarter	Partially Intensive
		Bioregulation and Biointeraction III	2	Fukuhara, Natsume, (Nakamura)	ac0009	First Quarter	Partially Intensive
		Bioregulation and Biointeraction IV	2	Nakai, Moriyama, (Nakashima)	ac0010	Third Quarter	Partially Intensive
		Special Lecture on Agricultural Production Sciences I	1	(Komatsuzaki, Fujii) [Motobayashi, Sugihara]	ac0011	Second Quarter	Intensive
		Special Lecture on Agricultural Production Sciences II	1	(Hitsuka, Kanno) [Sakae Suzuki, Kanekatsu]	ac0012	Second Quarter	Intensive
		Special Lecture on Agricultural Production Sciences III	1	(Nishiyama, Iwanaga) [Katsuhiko Arai, Yokoyama]	ac0013	Second Quarter	Intensive
		Special Lecture on Agricultural Production Sciences IV	1	(Nomura, Kamakura) [Moriyama, Arie]	ac0014	Second Quarter	Intensive
	Applied Biological Chemistry course	Biomolecular and Biomaterial Chemistry I	2	Kitano and others	lc0101	First Quarter	
		Biomolecular and Biomaterial Chemistry II	2	Yoshida, Hattori, Nomura, Miyata	lc0102	Third Quarter	
		Physiological and Biological Chemistry I	2	Miura and others	lc0103	First Quarter	
		Physiological and Biological Chemistry II	2	Tonozuka and others	lc0104	Third Quarter	
		Science of Healthy Longevity I	2	(Part-time) [Nishikawa]	lc0105	First Quarter	
		Science of Healthy Longevity II	2	(Part-time) [Nishikawa]	lc0106	Third Quarter	
		Special Lecture on Applied Biological Chemistry I	1	(Uchida, Manyu) [Nishikawa]	lc0107	First Quarter	Intensive, biennial (open in R3)
		Special Lecture on Applied Biological Chemistry II	1	(Shigemoto-Uezumi) [Nishikawa]	lc0108	First Quarter	Intensive, biennial (open in R4)
		Special Lecture on Applied Biological Chemistry III	1	(Hosaka) [Miura]	lc0109	Third Quarter	Intensive, biennial (open in R3)
		Special Lecture on Applied Biological Chemistry IV	1	(Ohtou) [Nobumitsu Sasaki]	lc0110	First Quarter	Intensive, biennial (open in R4)
		Special Lecture on Applied Biological Chemistry V	1	(Nakajima) [Kawai]	lc0111	Third Quarter	Intensive, biennial (open in R3)
		Special Lecture on Applied Biological Chemistry VI	1	(Tachikawa, Yaoi) [Kitano]	lc0112	Second Quarter	Intensive, biennial (open in R4)
	Environmental Science and Natural Resources course	Ecomaterial Science I	2	Shikata	ec0101a	First Quarter	Biennial (open in R4)
				Haga	ec0101b	First Quarter	Biennial (open in R4)
		Ecomaterial Science II	2	Takayanagi	ec0102a	Third Quarter	Biennial (open in R3)
				Sato	ec0102b	Third Quarter	Biennial (open in R3)
				Ando	ec0102c	Third Quarter	Biennial (open in R3)
	Functional Control of Natural Resources I	2	Kasuya, Ohhmi, Horikawa	ec0103	First Quarter	Biennial (open in R3)	

Functional Control of Natural Resources II	2	Funada, Makoto Yoshida, Kose, Nakaba	ec0104	Third Quarter	Biennial (open in R4)
Environmental Biology I	2	Daichi, WatanabeMakoto, Matsuda	ec0105	First Quarter	
Environmental Biology II	2	Izuta, Tarao	ec0106	Third Quarter	Partially Intensive
Environmental Chemistry I	2	Takada, Nakashima, Mizukawa	ec0107	First Quarter	
Environmental Chemistry II	2	Yu Umezawa, You, Izumi Watanabe	ec0108	Third Quarter	
Ecosystem Conservation I	2	Kaneko, Kaoru Suzuki	ec0109a	First Quarter	Partially Intensive
		Kaneko, Uno	ec0109b	First Quarter	
		Uno, Suzukikaoru	ec0109c	First Quarter	
Ecosystem Conservation II	2	Yoshikawa, Akasaka	ec0110	First Quarter	Partially Intensive
Ecosystem Conservation III	2	Shimoda, Fukumoto	ec0111	Third Quarter	Partially Intensive
Forest Environment Conservation I	2	Toda, Chie	ec0112a	First Quarter	Partially Intensive
		Toda, Shiraki	ec0112b	First Quarter	
		Shiraki, Chie	ec0112c	First Quarter	
Forest Environment Conservation II	2	Iwaoka, Matsumoto	ec0113a	First Quarter	Partially Intensive
		Iwaoka, Kayou	ec0113b	First Quarter	
		Kayou, Matsumoto	ec0113c	First Quarter	
Forest Environment Conservation III	2	YoshidaTomohiro, Koike	ec0114	First Quarter	Partially Intensive
Special Lecture on Environmental Science and Natural Resources I	2	(Part-time) [Kose, Ando]	ec0115	First and Second Quarter	Intensive
Special Lecture on Environmental Science and Natural Resources II	2	(Aeachi, Miyazawa) [Shikata, Haga]	ec0116	Third and Fourth Quarter	Intensive
Special Lecture on Environmental Science and Natural Resources III	2	(Part-time) [Sato, Horikawa]	ec0117	First and Second Quarter	Intensive
Special Lecture on Environmental Science and Natural Resources IV	2	(Part-time) [Ohmi, Funada]	ec0118	Third and Fourth Quarter	Intensive
Special Lecture on Environmental Science and Natural Resources V	2	(Part-time) [Tarao, Izumi Watanabe]	ec0119	First and Second Quarter	Intensive, biennial (open in R3)
Special Lecture on Environmental Science and Natural Resources VI	2	(Part-time) [Makoto Watanabe, Izuta]	ec0120	Third and Fourth Quarter	Intensive, biennial (open in R4)
Special Lecture on Environmental Science and Natural Resources VII	2	(Part-time) [Matsuda, Yu Umezawa]	ec0121	First and Second Quarter	Intensive, biennial (open in R3)
Special Lecture on Environmental Science and Natural Resources VIII	2	(Part-time) [Nakashima, Takada]	ec0122	Third and Fourth Quarter	Intensive, biennial (open in R4)
Special Lecture on Environmental Science and Natural Resources IX	2	(Part-time) [Toda, Matsumoto]	ec0123	Second Quarter	Intensive
Special Lecture on Environmental Science and Natural Resources X	2	(Part-time) [Kaoru Suzuki, Yoshikawa, Tomohiro Yoshida, Akasaka]	ec0124	Third Quarter	Intensive

Special Field subjects	Agricultural Engineering and Agro-Food Informatics course	Rural and environmental engineering I	2	Saito	tc0001	First Quarter	Intensive	
		Rural and environmental engineering II	2	Nakajima	tc0002	First Quarter		
		Rural and environmental engineering III	2	Fukuda	tc0003	First Quarter		
		Biological and agricultural engineering I	2	Tatsumi, Yamashita	tc0004	Third Quarter		
		Biological and agricultural engineering II	2	Chousa, Tojo	tc0005	First Quarter		
		Biological and agricultural engineering III	2	Sakai	tc0006	Third Quarter		
		Special Lecture on Agricultural Engineering and Agro-Food Informatics I	2	(Part-time) [Tatsumi, Saito]	tc0007	Second Quarter		
	Sustainable Society course	Human Coexistence I	2	R3 Sawa·R4 Ohkura	sc0001	First Quarter		in English
		Human Coexistence II	2	Takahashi, Takemoto	sc0002	First Quarter		
		Social Studies in Environment I	2	R3: Hiroshi Yoshida, R4:Tsukasa Watanabe	sc0003	First Quarter		
		Social Studies in Environment II	2	R3: Enomoto, R4: Asaoka	sc0004	Third Quarter		
		Economics of Food and Environment I	2	R3: Sachiko Arai, R4: Yamazaki	sc0005	First Quarter		
		Economics of Food and Environment II	2	Chitose, Kusadokoro	sc0006	Third Quarter		
		Economics of Food and Environment III	2	Nomiyama, Miyama	sc0007	First Quarter		
		Special Lecture on Sustainable Societies I	2	(Part-time) [SC learning support staff]	sc0008	First Quarter		
	International Innovative Agricultural Science course	International Environmental Rehabilitation and Conservation I	2	Gomi	ic0001	First Quarter	in English	
		International Environmental Rehabilitation and Conservation II	2	Hirozumi Watanabe, Kato	ic0002	First Quarter	in English	
		International Biological Production and Resource Science I	2	Oikawa, Okazaki, Katsura	ic0003	First Quarter	in English	
		International Biological Production and Resource Science II	2	Katsura, Oikawa, Okazaki	ic0004	First Quarter	in English	
		International Life and Biological Chemistry I	2	Miura and other in LC	ic0005	First Quarter	In English, Biennial (open in R4)	
		International Life and Biological Chemistry II	2	[Yamagata]	ic0006	Third Quarter	In English, Biennial (open in R3)	
		International Rural Development and Rural Area I	2	Kawabata, Nie	ic0007	Third Quarter	in English	
		International Rural Development and Rural Area II	2	Masaaki Yamada, Nie	ic0008	Third Quarter	in English	
		International Applied Animal Science I	2	Takehara and other IC instructors	ic0009	First Quarter	in English	
		International Applied Animal Science II	2	Uchide and other IC instructors	ic0010	Third Quarter	in English	
		Special Lecture on International Innovative Agricultural Science I	2	(Makihara) [Katsura]	ic0011	Third Quarter	in English	
	Thesis related course	A	Special Research in Agricultural Science I	◎4	Main advisor	The code number differs depending on the program and instructor. Please refer to "X. Code number list for Thesis	Full year (1st year)	Take 6 credits: Spring students select from Group A and Fall students select from Group B.
			Special Research in Agricultural Science II	○1	Main advisor		Full year (2nd year)	
			Research expansion in Agricultural Science I	○1	Sub advisor		Full year (1st year)	
			Research expansion in Agricultural Science II	○1	Sub advisor		Full year (1st year)	
		B	Special Research in Agricultural Science III	◎4	Main advisor		Irregular - Full year (1st year)	
			Special Research in Agricultural Science IV	○1	Main advisor		Irregular - Full year (2nd year)	

Special Exercise	Research expansion in Agricultural Science III	○1	Sub advisor	related course by program."	Irregular - Full year (1st year)	Spring students should take I and Fall students should take II.
	Research expansion in Agricultural Science IV	○1	Sub advisor		Irregular - Full year (1st year)	
	Special Exercise in Agricultural Science I	◎4	Main advisor		Full year (1st year)	
	Special Exercise in Agricultural Science II	◎4	Main advisor		Irregular - Full year (1st year)	
	Special exercise for Publication Review I	◎2	Main advisor		Full year (1st year)	
	Special exercise for Publication Review II	◎2	Main advisor		Irregular - Full year (1st year)	

- (1) ◎ mark = compulsory, ○ mark = compulsory elective
- (2) You must take 18 credits or more from Common fundamental courses, Common exercise courses, Specialized courses, Reinforcing subjects and courses in other graduate schools, and take 12 credits of Thesis related course, and earn total 30 credits or more. provided however, you can take up to 4 credits of Reinforcing subjects and up to 2 credits of Courses in other faculties.
- (3) You must take 4 credits or more from Common fundamental courses, including 1 credit from the Overview course of your own course, 1 credit from Overview corse of other courses, and 1 credit from ◎ marked compulsory courses.
- (4) You must take 2 credits or more from Common exercise courses, including 1 credit from ○ marked compulsory elective course.
- (5) You must take 4 credits or more from Specialized courses, including 2 credits or more from the courses of your own course.
- (6) You must take total 12 credits of Thesis related course, including 6 credits of Special Research courses, and 6 credits of Special Exercise courses.
- (7) Courses with plural code numbers will have plural classes with different contents. Please make sure to use the code number you will attend. Even the contents of the class are different, you cannot take the same course more than once.
- (8) As a requirement for graduation, you must complete the program you belong to. For the requirements for graduation by program, please refer to page 24 - 26.

(1) Curriculum Policy

The Graduate School of Agriculture aims at not only learning the traditional agricultural science, related knowledges, and its technical systems, but also covering the wider range of agricultural sciences from food to health and the standpoints of people's life and rural community development, thereby fostering capable individuals flourish in global society. In order to achieve the above goals, we provide educational studies to obtain following capabilities.

1. Foster highly advanced expertise and techniques related to agricultural and forestry science and life science including food, health, bioscience, biological resources, resource management, information, and social infrastructure of farming villages which are essential to resolving the problems of population, food, resources, and environment and required in sustainable society.
2. While establishing respective expertise in each specialized field, makes it one's mission to contribute to the sustainable development of society, and develop one's capability and insights to deeply comprehend and see-through nature, human being and society and flourish as an international person with high perspective.
3. Develop the capability to research the assignment, fully use the scientific methodology to satisfy the requests from the society, and solve the issues based on the situation in the field, esteem the study moral, positively study and research and make reports and papers, and present it at academic conferences or international meetings.
4. Develop the capability to communicate well, understand the history and culture of foreign countries, balance the interdisciplinary and field specific studies, and lead the international society.

(2) The features of each course and program

In the master's course for agricultural science, we have 6 courses and 9 programs to deepen students' expertise in each field. The features of each courses and programs are as below.

Agricultural Production Sciences course

Fosters the specialized expertise and techniques to be able to improve the efficiency and optimize the food production from breeding, producing, protecting plants, to controlling quality and realize the safe and reliable food production, and through the clarification of biotic function, foster highly advanced expertism to advance the science and develop new technique in producing living thing and protecting plants.

【Agricultural Production Sciences program】

Fosters the specialized expertise in production environment and technique for producing living being, and in science and techniques to be the base for the production of plants and animals.

【Bioregulation and Biointeraction program】

Fosters the specialized expertise in the research fields of bioregulations and biointeraction of

plants, insects, and microorganism to serve for the protection of plants.

Applied Biological Chemistry course

【Applied Biological Chemistry program】

Unifies the fields of food and health and fosters the specialized expertise in clarification of the useful biotic function and technology development that realize the new biotic functions and drug discovery to cope with the change of the society and environment.

Environmental Science and Natural Resources course

Understands the various phenomenons of water, soil, livings, and air in changing environment and develop the specialized knowledge and skill comprehensively solve the various complicated challenges in agriculture and forestry that are required for the building resilient society.

【Natural Resources and Ecomaterials program】

Fosters the advanced technology development capability to analyze the structures and functions of the resource materials such as biomass mainly from plants, to develop its utilization technology, and to realize the reduction of environmental load to be required for the building of sustainable society.

【Environmental Science on Biosphere program】

Clarifies the various factors of material cycle, current status of environment pollution, and the influence on ecosystem through monitoring and experiment of environment, to develop the professional capability to forecast the natural environment and devise and implement the appropriate method to correct it.

【Natural Environment Conservation program】

In order to harmonize the production and protection, studies wide range of knowledge and techniques about soil, water, wildlife, forest, montane, city, and human being and foster the individual who can view them from the standpoint of conservation for sustainable utilization of natural resource and protection and recovery of natural environment.

Agricultural Engineering and Agro-Food Informatics course

【Agricultural Engineering and Agro-Food Informatics program】

In order to resolve various issues in sustainable production and supply of foods both in local community and globally, studies information technology and specialized knowledge both in agriculture and engineering fields that would contribute to the building of social infrastructure, development of production engineering, and safety of foods.

Sustainable Society course

【Sustainable Society program】

Aiming at the building environmental symbiosis type sustainable society, which is an

overriding priority of modern world, foster the individuals who can identify the issues based on the knowledge in humanity and social science and plan, act and harmonize the solutions with expertise.

International Innovative Agricultural Science course

【International Innovative Agricultural Science program】

Fosters the expertise and technique to address the agricultural and environmental issues to facilitate the discussion crossing the boundaries of languages and cultures and develops and executes the road map for solution.

(3) Curriculum

Courses can be classified into Common fundamental courses, Common exercise courses, Specialized courses, and Thesis related courses. Their contents are as follows.

【Common fundamental courses】

As fundamental knowledges for highly specialized professionals or study in doctoral courses, you can learn wider range of basics in agricultural and engineering sciences as well as the related fields of human and social sciences as the basis for building sustainable society taking advantage of agricultural science in next generation. Together with the overview courses for each course, a TUAT specific interdisciplinary course "Special lecture for 21st century's agriculture science" are designated as compulsory courses. You will also learn "Introduction for Science of Agriculture and Technology" and obtain mutual communication skill at "Multicultural communication and transmission." "Advanced lecture of Green, Food, and Life science" will give you the chance to learn global cutting-edge research in various fields by the lectures of foreign instructors of our Institute of Global Innovation Research. For foreign students, there are "Japanese I" and "Japanese II" as a language support in order to facilitate their smooth research activities in Japan.

【Common exercise courses】

As the fundamental knowledge for the studies of agricultural sciences and related fields, it covers the areas of safe laboratory management, bioethics, research ethics, and international laws as well as practical expertise for basic analysis such as science of statistics and spatial information analysis using GIS. "Exercise for Methods of Agricultural Experimental design and Statistical Analysis I" will have plural instructors with different specialized fields so that students can learn field specific methods for planning experiments and processing statistics for their own research field. "International Research Presentation I (or II) " aims at the development of panoramic and interdisciplinary view in agricultural science and a compulsory elective course.

【Specialized courses】

These courses aim at deepening conventional expertise necessary for the problem solution in agricultural science while learning about cutting-edge research and insights.

【Thesis related courses】

Study and research for writing master thesis Thesis related course has two categories of Special Research and Special Exercise.

In the category of Special Research, "Special Research in Agricultural Science I (or III) " (4 credits) by main advisor is compulsory courses. If you write fusion type master thesis where the involvement of your sub advisor is significant, you will take the 2 credits from the Special Research courses by your sub advisor. Otherwise, you take one each credit from the Special Research courses by your main advisor and sub advisor.

(4) Overview of courses

For the content of each courses please refer to SPICA or search syllabus.

【Syllabus search】

<http://spica.gakumu.tuat.ac.jp/syllabus/SearchMain.aspx?>



X. Code list for Thesis related course by program

Among the Thesis related courses, the courses which instructors are your main advisors (Special Research in Agricultural Science I and II, Special Exercise in Agricultural Science I and II, and Special exercise for Publication Review) have different code number by the program you belong to.

On the other hands, those courses instructed by your sub advisors (Research expansion in Agricultural Science I, II, III and IV) have different code number by the instructor.

Please refer to the below list and use the code numbers for the program you belong to.

1. Code numbers for Main advisor courses

Program you belong to	Special Research in Agricultural Science I	Special Research in Agricultural Science II	Special Research in Agricultural Science III	Special Research in Agricultural Science IV	Special Exercise in Agricultural Science I	Special Exercise in Agricultural Science II	Special exercise for Publication Review I	Special exercise for Publication Review II
Agricultural Production Sciences course Agricultural Production Sciences program	th1001	th1011	th2001	th2011	th1031	th2031	th1041	th2041
Agricultural Production Sciences course Bioregulation and Biointeraction program	th1002	th1012	th2002	th2012	th1032	th2032	th1042	th2042
Applied Biological Chemistry course Applied Biological Chemistry program	th1003	th1013	th2003	th2013	th1033	th2033	th1043	th2043
Environmental Science and Natural Resources course Natural Resources and Ecomaterials program	th1004	th1014	th2004	th2014	th1034	th2034	th1044	th2044
Environmental Science and Natural Resources course Environmental Science on Biosphere program	th1005	th1015	th2005	th2015	th1035	th2035	th1045	th2045
Environmental Science and Natural Resources course Natural Environment Conservation program	th1006	th1016	th2006	th2016	th1036	th2036	th1046	th2046
Agricultural Engineering and Agro-Food Informatics course Environmental and Agricultural Engineering program	th1007	th1017	th2007	th2017	th1037	th2037	th1047	th2047
Sustainable Society course Sustainable Coexisting Society program	th1008	th1018	th2008	th2018	th1038	th2038	th1048	th2048
International Innovative Agricultural Science course International Innovative Agricultural Science program	th1009	th1019	th2009	th2019	th1039	th2039	th1049	th2049

2. Code number for Sub advisor courses (By program, in the order of Japanese alphabet)

Agricultural Production Sciences course Agricultural Production Sciences program

Instructors	Research expansion in Agricultural Science I	Research expansion in Agricultural Science II	Research expansion in Agricultural Science III	Research expansion in Agricultural Science IV
Katsuhiko Arai	th1101	th1301	th2101	th2301
Katsuhiko Ito	th1237	th1437	th2237	th2437
Taiichiro Ohkawa	th1102	th1302	th2102	th2302
Naoko Otsu	th1103	th1303	th2103	th2303
Motoki Kanekatsu	th1105	th1305	th2105	th2305
Tsuyoshi Shinmura	th1107	th1307	th2107	th2307
Sou Sugihara	th1108	th1308	th2108	th2308
Satoshi Sugimura	th1109	th1309	th2109	th2309
Sakae Suzuki	th1110	th1310	th2110	th2310
Haruo Tanaka	th1111	th1311	th2111	th2311
Hiroko Tabunoki	th1112	th1312	th2112	th2312
Takuya Ban	th1113	th1313	th2113	th2313
Takashi Motobayashi	th1114	th1314	th2114	th2314
Tetsuya Yamada	th1115	th1315	th2115	th2315
Takeshi Yokoyama	th1116	th1316	th2116	th2316

Agricultural Production Sciences course Bioregulation and Biointeraction program

Instructors	Research expansion in Agricultural Science I	Research expansion in Agricultural Science II	Research expansion in Agricultural Science III	Research expansion in Agricultural Science IV
Tsutomu Arie	th1117	th1317	th2117	th2317
Maki Inoue	th1118	th1318	th2118	th2318
Hiroyuki Kasahara	th1119	th1319	th2119	th2319
Hiroshi Kawaide	th1120	th1320	th2120	th2320
Ken Komatsu	th1121	th1321	th2121	th2321
Madoka Nakai	th1122	th1322	th2122	th2322
Masahiro Natsume	th1123	th1323	th2123	th2323
Tsuyoshi Hiraoka	th1124	th1324	th2124	th2324
Toshiyuki Fukuhara	th1125	th1325	th2125	th2325
Hiromitsu Moriyma	th1126	th1326	th2126	th2326

Applied Biological Chemistry course Applied Biological Chemistry program

Instructors	Research expansion in Agricultural Science I	Research expansion in Agricultural Science II	Research expansion in Agricultural Science III	Research expansion in Agricultural Science IV
Sae Uchida*	th1243	th1443	th2243	th2443
Shinya Kawai	th1127	th1327	th2127	th2327
Yoshikazu Kitano	th1128	th1328	th2128	th2328
Eriko Suzuki	th1129	th1329	th2129	th2329
Nobumitsu Sasaki	th1130	th1330	th2130	th2330
Kazuhiro Shigemoto*	th1244	th1444	th2244	th2444
Takashi Tonozuka	th1132	th1332	th2132	th2332
Atsushi Nisikawa	th1133	th1333	th2133	th2333
Yoshihiro Nomura	th1134	th1334	th2134	th2334
Keiji Hasumi	th1135	th1335	th2135	th2335
Makoto Hattori	th1136	th1336	th2136	th2336
Yasuhiko Matsushita	th1137	th1337	th2137	th2337
Hiroshi Many*	th1245	th1445	th2245	th2445
Yutaka Miura	th1138	th1338	th2138	th2338
Shinji Miyata	th1248	th1448	th2248	th2448
Junki Miyamoto	th1250	th1450	th2250	th2450
Yohei Yamagata	th1139	th1339	th2139	th2339
Tadashi Yoshida	th1140	th1340	th2140	th2340

* Instructor from affiliated institutes

Environmental Science and Natural Resources course Natural Resources and Ecomaterials program

Instructors	Research expansion in Agricultural Science I	Research expansion in Agricultural Science II	Research expansion in Agricultural Science III	Research expansion in Agricultural Science IV
Masaharu Ohmi	th1142	th1342	th2142	th2342
Natsuki Kasuya	th1143	th1343	th2143	th2343
Ryota Kose	th1247	th1447	th2247	th2447
Keiichi Sato	th1145	th1345	th2145	th2345
Toshiyuki Sato	th1146	th1346	th2146	th2346
Masao Takayanagi	th1147	th1347	th2147	th2347
Satoshi Nakaba	th1148	th1348	th2148	th2348
Naoki Haga	th1149	th1349	th2149	th2349
Ryo Funada	th1150	th1350	th2150	th2350
Yoshiki Horikawa	th1151	th1351	th2151	th2351
Makoto oshida	th1152	th1352	th2152	th2352

Environmental Science and Natural Resources course
Environmental Science on Biosphere program

Instructors	Research expansion in Agricultural Science I	Research expansion in Agricultural Science II	Research expansion in Agricultural Science III	Research expansion in Agricultural Science IV
Takeshi Izuta	th1153	th1353	th2153	th2353
Yu Umezawa	th1154	th1354	th2154	th2354
Madoka Daichi	th1155	th1355	th2155	th2355
Hideshige Takada	th1156	th1356	th2156	th2356
Mitsunori Tarao	th1157	th1357	th2157	th2357
Yoshihiro Nakashima	th1158	th1358	th2158	th2358
Kazuhide Matsuda	th1159	th1359	th2159	th2359
Muneoki You	th1160	th1360	th2160	th2360
Izumi Watanabe	th1161	th1361	th2161	th2361
Makoto Watanabe	th1162	th1362	th2162	th2362

Environmental Science and Natural Resources course
Natural Environment Conservation program

Instructors	Research expansion in Agricultural Science I	Research expansion in Agricultural Science II	Research expansion in Agricultural Science III	Research expansion in Agricultural Science IV
Munemitsu Akasaka	th1163	th1363	th2163	th2363
Noriko Iwai	th1164	th1364	th2164	th2364
Masahiro Iwaoka	th1165	th1365	th2165	th2365
Yayoi Kaneko	th1166	th1366	th2166	th2366
Chihiro Kayo	th1167	th1367	th2167	th2367
Shinsuke Koike	th1168	th1368	th2168	th2368
Masahiro Shimoda	th1169	th1369	th2169	th2369
Katsushige Shiraki	th1170	th1370	th2170	th2370
Kaoru Suzuki	th1171	th1371	th2171	th2371
Dongsu Choi	th1172	th1372	th2172	th2372
Hiroto Toda	th1174	th1374	th2174	th2374
Hiroyuki Uno	th1175	th1375	th2175	th2375
Takeshi Matsumoto	th1176	th1376	th2176	th2376
Masato Yoshikawa	th1177	th1377	th2177	th2377
Tomohiro Yoshida	th1178	th1378	th2178	th2378

Agricultural Engineering and Agro-Food Informatics course
Agricultural Engineering and Agro-Food Informatics program

Instructors	Research expansion in Agricultural Science I	Research expansion in Agricultural Science II	Research expansion in Agricultural Science III	Research expansion in Agricultural Science IV
Hiroataka Saito	th1179	th1379	th2179	th2379
Kenshi Sakai	th1180	th1380	th2180	th2380
Kenichi Tatsumi	th1181	th1381	th2181	th2381
Tadashi Chousa	th1182	th1382	th2182	th2382
Seishu Tojo	th1183	th1383	th2183	th2383
Masahiro Nakajima	th1184	th1384	th2184	th2384
Shinji Fukuda	th1185	th1385	th2185	th2385
Megumi Yamashita	th1186	th1386	th2186	th2386

Sustainable Society course - Sustainable Society program

Instructors	Research expansion in Agricultural Science I	Research expansion in Agricultural Science II	Research expansion in Agricultural Science III	Research expansion in Agricultural Science IV
Yukihiko Asaoka	th1187	th1387	th2187	th2387
Sachiho Arai	th1188	th1388	th2188	th2388
Hiroyuki Enomoto	th1189	th1389	th2189	th2389
Shigeru Ohkura	th1251	th1451	th2251	th2451
Motoi Kusadokoro	th1190	th1390	th2190	th2390
Naoko Kouda	th1191	th1391	th2191	th2391
Yoshinari Sawa	th1192	th1392	th2192	th2392
Yoshitaka Takahashi	th1193	th1393	th2193	th2393
Taro Takemoto	th1195	th1395	th2195	th2395
Atsushi Chitose	th1196	th1396	th2196	th2396
Toshio Nomiya	th1197	th1397	th2197	th2397
Ryoichi Yamazaki	th1198	th1398	th2198	th2398
Hiroshi Yoshida	th1199	th1399	th2199	th2399
Tsukasa Watanabe	th1200	th1400	th2200	th2400

International Innovative Agricultural Science course International Innovative Agricultural Science program

Instructors	Research expansion in Agricultural Science I	Research expansion in Agricultural Science II	Research expansion in Agricultural Science III	Research expansion in Agricultural Science IV	Instructors	Research expansion in Agricultural Science I	Research expansion in Agricultural Science II	Research expansion in Agricultural Science III	Research expansion in Agricultural Science IV
Daigo Azakami	th1246	th1446	th2246	th2446	Hideshi Shibata	th1216	th1416	th2216	th2416
Kanako Ishihara	th1201	th1401	th2201	th2401	Makoto Shibuya	th1217	th1417	th2217	th2417
Kaori Ide	th1202	th1402	th2202	th2402	Miki Shimizu	th1218	th1418	th2218	th2418
Tatsuya Usui	th1238	th1438	th2238	th2438	Kazuhiko Suzuki	th1219	th1419	th2219	th2419
Tsuyoshi Uchide	th1203	th1403	th2203	th2403	Kazuaki Takehara	th1221	th1421	th2221	th2421
Natsumi Endo	th1239	th1439	th2239	th2439	Tomomi Tanaka	th1222	th1422	th2222	th2422
Yousei Oikawa	th1249	th1449	th2248	th2448	Ryo Tanaka	th1223	th1423	th2223	th2423
Tsutomu Ohmatsu	th1204	th1404	th2204	th2404	Takahide Taniguchi	th1224	th1424	th2224	th2424
Keitaro Ohmori	th1205	th1405	th2205	th2405	Kentaro Nagaoka	th1225	th1425	th2225	th2425
Shin Okazaki	th1206	th1406	th2206	th2406	Kouji Nishifuji	th1226	th1426	th2226	th2426
Keisuke Katsura	th1207	th1407	th2207	th2407	Hideki Hayashidani	th1227	th1427	th2227	th2427
Tasuku Kato	th1208	th1408	th2208	th2408	Ryuji Fukushima	th1228	th1428	th2228	th2428
Masahiro Kaneda	th1240	th1440	th2240	th2440	Tetsuya Furuya	th1230	th1430	th2230	th2430
Yoshiko Kawabata	th1209	th1409	th2209	th2409	Noboru Machida	th1231	th1431	th2231	th2431
Miori Kishimoto	th1210	th1410	th2210	th2410	Tetsuya Mizutani	th1232	th1432	th2232	th2432
Takashi Gomi	th1212	th1412	th2212	th2412	Tomoaki Murakami	th1242	th1442	th2242	th2442
Satoshi Koyama	th1213	th1413	th2213	th2413	Masaaki Yamada	th1233	th1433	th2233	th2433
Kazuaki Sasaki	th1214	th1414	th2214	th2414	Toshinori Yoshida	th1234	th1434	th2234	th2434
Yukiko Sassa	th1241	th1441	th2241	th2441	Gen Watanabe	th1235	th1435	th2235	th2435
Toshiyuki Sato	th1215	th1415	th2215	th2415	Hirozumi Watanabe	th1236	th1436	th2236	th2436

XI. Learning Teacher-Training Course

At Graduate School of Agriculture master course, you can earn Specialized Certificate for Teaching at Junior High School (Natural Science) , Specialized Certificate for Teaching at High School (Natural Science) , and Specialized Certificate for Teaching at Junior High School (Agricultural Science) .

In order to earn Specialized Certificate, you must; either already earned the “Class-1 Certificate for Teaching at Junior High School” for the same teaching subject or satisfied the requirements to obtain it; and obtain 24 credits or more from the subjects listed below corresponding to the teaching subject.

If a master course student at Graduate School of Agriculture takes Specialized Certificate for Teaching at Junior High School or at High School

Teaching Subject to be certified	Subject	Corresponding class	Credit (s)	Teaching Subject to be certified	Subject	Corresponding class	Credit (s)
Natural Science	Subjects on natural science	Overview for Agricultural Production Sciences I	1	Agriculture	Subjects on Agriculture	Overview for Agricultural Production Sciences II	1
		Overview for Applied Biological Chemistry I	1			Overview for Environmental Science and Natural Resources II	1
		Overview for Applied Biological Chemistry II	1			Overview for Agricultural Engineering and Agro-Food Informatics II	1
		Overview for Environmental Science and Natural Resources I	1			Overview for Sustainable Societies II	1
		Overview for Agricultural Engineering and Agro-Food Informatics I	1			Overview for International Innovative Agricultural Science II	1
		Overview for Sustainable Societies I	1			Agro-Environment Science II	2
		Overview for International Innovative Agricultural Science I	1			Plant Production Science II	2
		Agro-Environment Science I	2			Animal Production Science II	2
		Plant Production Science I	2			Bioregulation and Biointeraction II	2
		Animal Production Science I	2			Bioregulation and Biointeraction IV	2
		Bioregulation and Biointeraction I	2			Ecomaterial Science II	2
		Bioregulation and Biointeraction III	2			Functional Control of Natural Resources II	2
		Biomolecular and Biomaterial Chemistry I	2			Environmental Biology II	2
		Biomolecular and Biomaterial Chemistry II	2			Environmental Chemistry II	2
		Physiological and Biological Chemistry I	2			Ecosystem Conservation II	2
		Physiological and Biological Chemistry II	2			Forest Environment Conservation II	2
		Ecomaterial Science I	2			Rural and environmental engineering II	2
		Functional Control of Natural Resources I	2			Biological and agricultural engineering II	2
		Environmental Biology I	2			Human Coexistence I	2
		Environmental Chemistry I	2			Human Coexistence II	2
		Ecosystem Conservation I	2			Social Studies in Environment I	2
		Forest Environment Conservation I	2			Social Studies in Environment II	2
		Rural and environmental engineering I	2			Economics of Food and Environment II	2
		Biological and agricultural engineering I	2			Economics of Food and Environment III	2
International Environmental Rehabilitation and Conservation I	2	International Environmental Rehabilitation and Conservation II	2				
International Biological Production and Resource Science I	2	International Biological Production and Resource Science II	2				
International Rural Development and Rural Area I	2	International Rural Development and Rural Area II	2				

Graduate School of Agriculture Four-year Doctoral Course

Cooperative Division of Veterinary Sciences

XII. Doctoral Requirements and Subjects/Credits

Students must make an academic plan thoughtfully to complete the doctoral program. Registration of subjects should be done during a specified period.

1 Doctoral Requirements

Cooperative division of veterinary science awards the Degree of Doctor of Philosophy to students who enroll for the required number of years, acquire the specified number of credits, receive research guidance, and pass a doctoral thesis screening and examination.

(1) Required credits

The number of required credits is as follows. See page 51 for detail.

Division	The minimum number of required credits		
	Compulsory	Elective	Total
Veterinary Sciences	30	4	34

(2) Credit transfer system

Credits granted by credit-transfer agreement universities with TAT can be included to required credits up to 4 credits.

(3) Early completion

If you satisfy certain conditions, you can utilize "Early Completion Scheme" which allows you to complete the doctoral course in 3 years of enrollment. For details, please ask your advisor.

XIII. Application for doctoral thesis screening/examination

Students must submit the application for doctoral thesis screening/examination in accordance with the university regulation. Regarding the schedule for submission of application and the distribution time of the application form etc., please note that it will be announced every time by notice.

XIV. Long-term course study system

Division of Veterinary Sciences has long-term course study system. If you want to use this system, ask administrative office for details.

XV. Curriculum

1 Cooperative Division of Veterinary Sciences

Subjects and credits

Research Field	Category	Subjects	Credits	Code number	Teachers	Time of class								Required credits	Style of lectures	
						1st grade		2nd grade		3rd grade		4th grade				
						former	latter	former	latter	former	latter	former	latter			
Common Basic Lectures		◎ Basic Lecture for Veterinary Science A	2	VD51001	Faculty members	2								12 credits		
		◎ Basic Lecture for Veterinary Science B	2	VD51002	Faculty members			2								
		◎ Research Design Exercise	2	VD51003	Faculty members	2										
		◎ Research Presentation Exercise	2	VD51004	Faculty members			2								
		◎ Research Ethics (TUAT)	1	VD51005	Faculty members	1		1								
		◎ Research Ethics (Iwate)	1	VD51006	Faculty members	1		1								
		◎ Scientific English	2	VD51007	Agyeman·Yamazaki	2		2								
Basic Animal Medicine	Course Lectures	◎ Special Lecture for Basic Animal Medicine A (TUAT)	2	VD54001~	See page 54	Main Advisor	2							6 credits from course lectures, 12 credits from research guidance lectures, 18 credits in total	Intensive lecture	
		◎ Special Lecture for Basic Animal Medicine B (TUAT)	2	VD54101~		Primary assistant-advisor	2									
		◎ Special Lecture for Basic Animal Medicine C (Iwate)	2	VD54201~		Secondary assistant-advisor			2							
		◎ Special Lecture for Basic Animal Medicine A (Iwate)	2													
		◎ Special Lecture for Basic Animal Medicine B (Iwate)	2													
		◎ Special Lecture for Basic Animal Medicine C (TUAT)	2													
	Research Guidance Lectures	◎ Special Advanced Seminar for Basic Animal Medicine A (TUAT)	8	VD54301~	See page 54	Main Advisor	8									
		◎ Special Advanced Seminar for Basic Animal Medicine B (TUAT)	2	VD54401~		Primary assistant-advisor	2									
		◎ Special Advanced Seminar for Basic Animal Medicine C (Iwate)	2	VD54501~		Secondary assistant-advisor			2							
		◎ Special Advanced Seminar for Basic Animal Medicine A (Iwate)	8													
		◎ Special Advanced Seminar for Basic Animal Medicine B (Iwate)	2													
		◎ Special Advanced Seminar for Basic Animal Medicine C (TUAT)	2													
Veterinary Hygiene Science	Course Lectures	◎ Special Lecture for Veterinary Hygiene Science A (TUAT)	2	VD55001~	See page 54	Main Advisor	2							6 credits from course lectures, 12 credits from research guidance lectures, 18 credits in total	Intensive lecture	
		◎ Special Lecture for Veterinary Hygiene Science B (TUAT)	2	VD55101~		Primary assistant-advisor	2									
		◎ Special Lecture for Veterinary Hygiene Science C (Iwate)	2	VD55201~		Secondary assistant-advisor			2							
		◎ Special Lecture for Veterinary Hygiene Science A (Iwate)	2													
		◎ Special Lecture for Veterinary Hygiene Science B (Iwate)	2													
		◎ Special Lecture for Veterinary Hygiene Science C (TUAT)	2													
	Research Guidance Lectures	◎ Special Advanced Seminar for Veterinary Hygiene Science A (TUAT)	8	VD55301~	See page 54	Main Advisor	8									
		◎ Special Advanced Seminar for Veterinary Hygiene Science B (TUAT)	2	VD55401~		Primary assistant-advisor	2									
		◎ Special Advanced Seminar for Veterinary Hygiene Science C (Iwate)	2	VD55501~		Secondary assistant-advisor			2							
		◎ Special Advanced Seminar for Veterinary Hygiene Science A (Iwate)	8													
		◎ Special Advanced Seminar for Veterinary Hygiene Science B (Iwate)	2													
		◎ Special Advanced Seminar for Veterinary Hygiene Science C (TUAT)	2													

Veterinary Clinical Science	Course Lectures	◎ Special Lecture for Veterinary Clinical Science A (TUAT)	2	VD56001~	See page 55	Main Advisor	2												
		◎ Special Lecture for Veterinary Clinical Science B (TUAT)	2	VD56101~		Primary assistant-advisor	2												
		◎ Special Lecture for Veterinary Clinical Science C (Iwate)	2	VD56201~		Secondary assistant-advisor			2										
		◎ Special Lecture for Veterinary Clinical Science A (Iwate)	2																
		◎ Special Lecture for Veterinary Clinical Science B (Iwate)	2																
		◎ Special Lecture for Veterinary Clinical Science C (TUAT)	2																
	Research Guidance Lectures	◎ Special Advanced Seminar for Veterinary Clinical Science A (TUAT)	8	VD56301~	See page 55	Main Advisor	8												
		◎ Special Advanced Seminar for Veterinary Clinical Science B (TUAT)	2	VD56401~		Primary assistant-advisor	2												
		◎ Special Advanced Seminar for Veterinary Clinical Science C (Iwate)	2	VD56501~		Secondary assistant-advisor			2										
		◎ Special Advanced Seminar for Veterinary Clinical Science A (Iwate)	8																
		◎ Special Advanced Seminar for Veterinary Clinical Science B (Iwate)	2																
		◎ Special Advanced Seminar for Veterinary Clinical Science C (TUAT)	2																
Lectures of Veterinary-related Research Fields	○ Special Lecture in related Research Fields	2	VD52001		Faculty members	2													
	○ International Infectious Disease Epidemiology	1	VD52002		MIZUTANI,OMATSU ,FURUYA		1												
	○ Advanced Clinical Veterinary Medicine	1	VD52003		MACHIDA and Faculty members				1										
	○ Food Hygiene Management	1	VD52004		SATOH I. and Faculty members		1												
	○ Coexistence of Animal and Human	1	VD52005		YAMASAKI M.,OKADA,FUKUI				1										
Advanced Practice	○ External Practice for Basic Animal Medicine (RIKEN)	1	VD53001																
	○ External Practice for Veterinary Hygiene Science (National Institute of Infectious diseases)	1	VD53002																
	○ External Practice for Veterinary Hygiene Science (National Institute of Health Sciences)	1	VD53003																
	○ External Practice for Veterinary Hygiene Science (National Agriculture and Food Research Organization)	1	VD53004																
	○ External Practice for Veterinary Clinical Science (Japan Racing Association)	1	VD53005																
	○ Special Advanced Practice in Veterinary Science (TUAT)	1	VD53101~	See page 54-	Main Advisor														
	○ Overseas Practice A (TUAT)	1	VD53201~		Main Advisor														
	○ Overseas Practice B (TUAT)	2	VD53301~		Main Advisor														
	○ Special Advanced Practice in Veterinary Science (Iwate)	1																	
	○ Overseas Practice A (Iwate)	1																	
○ Overseas Practice B (Iwate)	2																		

Completion Requirements		
Compulsory	Elective	TOTAL
30 credits	4 credits or more	34 credits or more

★Attention on registration★

Special Advanced Seminar for Basic Animal Medicine A or Special Advanced Seminar for Veterinary Hygiene Science A or Special Advanced Seminar for Veterinary Clinical Science A must be registered at the latter semester of 4th grade.

Remarks

(1) ◎Compulsory, ○Elective

(2) Take course lectures and research guidance lectures (◎ 18 credits) from belonging track

(1) Curriculum Policy

The Cooperative Division of Veterinary Sciences aims to deepen the philosophy advocated by the Cooperative Department of Veterinary Medicine, Faculty of Agriculture, TAT & Iwate university, and to foster research leaders who have innovative ways of thinking based on advanced veterinary science for companion/food animals and animal hygiene/public health.

This program consists of three courses of "Basic Animal Medicine", "Veterinary Hygiene Science", "Veterinary Clinical Science".

In the curriculum, there are five subject groups (Common basic lectures, Course lectures, Research guidance lectures, Lectures of veterinary-related research fields, Advanced practice). Students can receive the academic supports and advance lectures provided by Research and Education Center for Prevention of Global Infectious Diseases and Animal Medical Center of TAT, and Food Animal Medicine & Food Safety Research Center (FAMS) and Animal Hospital of Iwate university.

Students learn expertise from the faculty members of both TAT and Iwate universities through lectures and exercise related to each field. The advanced practical subjects are carried out by the collaboration with national and regional research institutions and overseas universities etc. to make students aware of social significance of their own research.

Class styles are lecture (face to face lecture, distance lecture, intensive lecture, omnibus lecture) and exercise (seminar type, intensive joint exercise). These link subjects of study of the faculty members of both universities to support research activity from the multiple points of view for the preparation of a doctoral thesis.

(2) Major Track and Research Field

1) Basic Animal Medicine

Students in this field are trained to become outstanding researchers who will contribute to the advancement of Veterinary Anatomy, Physiology, Pharmacology and Pathology.

2) Veterinary Hygiene Science

Students in this field are trained to become outstanding researchers who will contribute to the advancement of Animal Hygiene and Veterinary Public Health in collaboration with Research and Education Center for Prevention of Global Infectious Diseases (TAT) and Food Animal Medicine & Food Safety Research Center (FAMS, Iwate University).

3) Veterinary Clinical Science

Students in this field are trained to become outstanding researchers who will contribute to the advancement of Farm Animal Medicine and Companion Animal Medicine in collaboration with Animal Medical Center (TAT) and Animal Hospital (Iwate University).

(3) Syllabus

Visit the following website for syllabus of subjects.

<http://spica.gakumu.tuat.ac.jp/syllabus/SearchMain.aspx?>



講座別論文指導科目コード表

■ 動物基礎医学講座 Basic Animal Medicine

所属講座 Major Track	授業科目名 Subjects	動物基礎医学特論 A(東京農工大学) Special Lecture for Basic Animal Medicine A (TUAT)	動物基礎医学特論 B(東京農工大学) Special Lecture for Basic Animal Medicine C (Iwate)	動物基礎医学特論 C(岩手大学) Special Lecture for Basic Animal Medicine C (Iwate)	動物基礎医学特別 演習 A(東京農工大学) Special Advanced Seminar for Basic Animal Medicine A (TUAT)	動物基礎医学特別 演習 B(東京農工大学) Special Advanced Seminar for Basic Animal Medicine B (TUAT)	動物基礎医学特別 演習 C(岩手大学) Special Advanced Seminar for Basic Animal Medicine C (Iwate)	獣医学特別演習 (東京農工大学) Special Advanced Practice in Veterinary Science (TUAT)	海外演習 A (東京農工大学) Overseas Practice A (TUAT)	海外演習 B (東京農工大学) Overseas Practice B (TUAT)
動物基礎医学講座 Basic Animal Medicine	担当教員 Teachers									
	柴田 秀史 SHIBATA Hideshi	VD54001	VD54101		VD54301	VD54401		VD53101	VD53201	VD53301
	渋谷 淳 SHIBUTANI Makoto	VD54002	VD54102		VD54302	VD54402		VD53102	VD53202	VD53302
	永岡 謙太郎 NAGAOKA Kentaro	VD54008	VD54108		VD54308	VD54408		VD53108	VD53208	VD53308
	渡辺 元 WATANABE Gen	VD54003	VD54103		VD54303	VD54403		VD53103	VD53203	VD53303
	金田 正弘 KANEDA Masahiro	VD54011	VD54133		VD54311	VD54433		VD53133	VD53233	VD53333
	小山 哲史 KOYAMA Satoshi	VD54004	VD54104		VD54304	VD54404		VD53104	VD53204	VD53304
	佐々木 一昭 SASAKI Kazuaki	VD54005	VD54105		VD54305	VD54405		VD53105	VD53205	VD53305
	佐藤 俊幸 SATOHI Toshiyuki	VD54006	VD54106		VD54306	VD54406		VD53106	VD53206	VD53306
	鈴木 和彦 SUZUKI Kazuhiko	VD54007	VD54107		VD54307	VD54407		VD53107	VD53207	VD53307
	村上 智亮 MURAKAMI Tomoaki	VD54012	VD54134		VD54312	VD54434		VD53134	VD53234	VD53334
	吉田 敏則 YOSHIDA Toshinori	VD54009	VD54109		VD54309	VD54409		VD53109	VD53209	VD53309
	臼井 達哉 USUI Tatsuya	VD54010	VD54110		VD54310	VD54410		VD53110	VD53210	VD53310
	落合 謙爾 OCHIAI Kenji			VD54201			VD54501			
	木崎 景一郎 KIZAKI Keichiro			VD54202			VD54502			
	佐藤 洋 SATOHI Hiroshi			VD54203			VD54503			
	古市 達哉 FURUICHI Tatsuya			VD54204			VD54504			
	山本 欣郎 YAMAMOTO Yoshio			VD54205			VD54505			
	中牟田 信明 NAKAMUTA Nobuaki			VD54206			VD54506			
	山田 美鈴 YAMADA Mizuzu			VD54207			VD54507			

■ 獣医衛生学講座 Veterinary Hygiene Science

所属講座 Major Track	授業科目名 Subjects	獣医衛生科学特論 A(東京農工大学) Special Lecture for Veterinary Hygiene Science A (TUAT)	獣医衛生科学特論 B(東京農工大学) Special Lecture for Veterinary Hygiene Science B (TUAT)	獣医衛生科学特論 C(岩手大学) Special Lecture for Veterinary Hygiene Science C (Iwate)	獣医衛生科学特別 演習 A(東京農工大学) Special Advanced Seminar for Veterinary Hygiene Science A (TUAT)	獣医衛生科学特別 演習 B(東京農工大学) Special Advanced Seminar for Veterinary Hygiene Science B (TUAT)	獣医衛生科学特別 演習 C(岩手大学) Special Advanced Seminar for Veterinary Hygiene Science C (Iwate)	獣医学特別演習 (東京農工大学) Special Advanced Practice in Veterinary Science (TUAT)	海外演習 A (東京農工大学) Overseas Practice A (TUAT)	海外演習 B (東京農工大学) Overseas Practice B (TUAT)
獣医衛生学講座 Veterinary Hygiene Science	担当教員 Teachers									
	竹原 一明 TAKEHARA Kazuaki	VD55002	VD55112		VD55302	VD55412		VD53112	VD53212	VD53312
	永田 典代 NAGATA Noriyo	VD55003	VD55113		VD55303	VD55413		VD53113	VD53213	VD53313
	水谷 哲也 MIZUTANI Tetsuya	VD55005	VD55115		VD55305	VD55415		VD53115	VD53215	VD53315
	李 天成 Li Tiancheng	VD55006	VD55116		VD55306	VD55416		VD53116	VD53216	VD53316
	谷口 隆秀 TANIGUCHI Takahide	VD55007	VD55117		VD55307	VD55417		VD53117	VD53217	VD53317
	林谷 秀樹 HAYASHIDANI Hideaki	VD55008	VD55118		VD55308	VD55418		VD53118	VD53218	VD53318
	古谷 哲也 FURUYA Tetsuya	VD55009	VD55119		VD55309	VD55419		VD53119	VD53219	VD53319
	大松 勉 OMATSU Tsutomu	VD55010	VD55120		VD55310	VD55420		VD53120	VD53220	VD53320
	石原 加奈子 ISHIHARA Kanako	VD55011	VD55121		VD55311	VD55421		VD53121	VD53221	VD53321
	佐々 悠木子 SASSA Yukiko	VD55012	VD55122		VD55312	VD55422		VD53122	VD53222	VD53322
	板垣 匡 ITAGAKI Tadashi			VD55208			VD55508			
	佐藤 至 SATOHI Itaru			VD55209			VD55509			
	村上 賢二 MURAKAMI Kenji			VD55210			VD55510			
	山本 健久 YAMAMOTO Takehisa			VD55211			VD55511			

■ 獣医臨床医科学講座 Veterinary Clinical Science

所属講座 Major Track	授業科目名 Subjects	獣医臨床医科学 特論 A (東京農工大学) Special Lecture for Veterinary Clinical Science A (TUAT)	獣医臨床医科学 特論 B (東京農工大学) Special Lecture for Veterinary Clinical Science B (TUAT)	獣医臨床医科学 特論 C (岩手大学) Special Lecture for Veterinary Clinical Science C (Iwate)	獣医臨床医科学 特別演習 A (東京農工大学) Special Advanced Seminar for Veterinary Clinical Science A (TUAT)	獣医臨床医科学 特別演習 B (東京農工大学) Special Advanced Seminar for Veterinary Clinical Science B (TUAT)	獣医臨床医科学 特別演習 C (岩手大学) Special Advanced Seminar for Veterinary Clinical Science C (Iwate)	獣医学特別演習 (東京農工大学) Special Advanced Practice in Veterinary Science (TUAT)	海外演習 A (東京農工大学) Overseas Practice A (TUAT)	海外演習 B (東京農工大学) Overseas Practice B (TUAT)
獣医臨床医科学講座 Veterinary Clinical Science	担当教員 Teachers									
	打出 毅 UCHIDE Tsuyoshi	VD56001	VD56123		VD56301	VD56423		VD53123	VD53223	VD53323
	町田 登 MACHIDA Noboru	VD56002	VD56124		VD56302	VD56424		VD53124	VD53224	VD53324
	田中 知巳 TANAKA Tomomi	VD56003	VD56125		VD56303	VD56425		VD53125	VD53225	VD53325
	福島 隆治 FUKUSHIMA Ryuji	VD56004	VD56126		VD56304	VD56426		VD53126	VD53226	VD53326
	清水 美希 SHIMIZU Miki	VD56005	VD56127		VD56305	VD56427		VD53127	VD53227	VD53327
	田中 綾 TANAKA Ryou	VD56006	VD56128		VD56306	VD56428		VD53128	VD53228	VD53328
	西藤 公司 NISHIFUJI Koji	VD56007	VD56129		VD56307	VD56429		VD53129	VD53229	VD53329
	井手 香織 IDE Kaori	VD56008	VD56130		VD56308	VD56430		VD53130	VD53230	VD53330
	大森 啓太郎 OHMORI Keitaro	VD56009	VD56131		VD56309	VD56431		VD53131	VD53231	VD53331
	岸本 海織 KISHIMOTO Miori	VD56010	VD56132		VD56310	VD56432		VD53132	VD53232	VD53332
	宇塚 雄次 UZUKA Yuji			VD56213			VD56513			
	岡田 啓司 OKADA Keiji			VD56214			VD56514			
	佐藤 繁 SATO Shigeru			VD56215			VD56515			
	高橋 透 TAKAHASHI Toru			VD56216			VD56516			
	山崎 貴大 YAMASAKI Masahiro			VD56217			VD56517			
	片山 泰章 KATAYAMA Masataka			VD56218			VD56518			
福井 大祐 FUKUI Daisuke			VD56219			VD56519				
寺嶋 淳 TERASHIMA Jun			VD56220			VD56520				

XVI. Contact information of instructors at Graduate School of Agriculture

For the affiliations and mail addresses of instructors, please refer to the Researchers Profile or Course Information for Students on the University web page.

Researcher Profile Search at <http://www.rd.jskrff.com/researcher/index.html>

Course Information for Faculty of Agriculture

http://www.tuat.ac.jp/documents/tuat/campuslife_career/campuslife/course/2021risyu_nogakubu.pdf

XVII. Offered Programs

TUAT provides wide range of programs offering various educational opportunities to study abroad and others.

You can check it on the University web page at the links below.

Website for Organization for the Advancement of Education and Global Learning

<http://web.jskrff.com/~eagl/outline/program.html>



Study abroad portal by Organization for the Advancement of Education and Global Learning

<http://web.jskrff.com/~studyabroad/>



Global Development program of Human Resources combining humanities and sciences by Tokyo Universities of Foreign Studies, Tokyo University of Agriculture and Technology, and The University of Electro-Communications

<http://web.jskrff.com/~eagl/global/program2.html>



Website of International Affairs Office

http://web.jskrff.com/~intl/ja/tuat_student/



WISE program in Tokyo University of Agriculture and Technology

<http://www.wise.tuat.ac.jp/>



XVIII. 各種様式集

- 学外研究届（国内）（付表A－1）
- 学外研究・実習等に伴う依頼状等の送付先（付表A－2）
- 自動車運転許可申請書（付表A－3）
- 渡航届（付表B）
- 学外研究実施について（報告）（付表C）
- 科目履修登録届（インターン・学外実習用）

Most of the forms can be downloaded from the Web bulletin board.

【URL for Web bulletin board】

<http://t-board.office.jskrtf.com/A/menu.php>



(付表A-1)

学府長・学部長	事務長	学生支援室長	係長	主任	係員		担当

学 外 研 究 届 (国 内)

農学府長・農学部長 殿

年 月 日

下記のとおり、学外（研究・教育）活動について安全管理の指導を講じた上、実施することをお届けします。

※依頼状の送付 不要 必要
 (依頼状が必要な場合は、(付表A-2)を添付)

指導教員名
 (自署)
 【内線番号： _____】

記

日程	令和 年 月 日 () ~ 令和 年 月 日 ()				
	(月・週) 回 , 1日 時間(目安) ※1週間以上の場合、日程表を添付のこと。				
行先	名 称				
	所在地	〒 _____ TEL: _____			
同行教員	(無・有)氏名:	所属:			
研究先での指導者	(無・有)氏名:	所属:			
自動車利用状況	<input type="checkbox"/> 自動車利用あり (↓チェック) <input type="checkbox"/> 自動車は利用しない				
	運転者: <input type="checkbox"/> 同行教員または研究先での指導員 <input type="checkbox"/> 本学学生 (本届に自動車運転許可申請を添付済み <input type="checkbox"/>)				
自動車運転許可対象学生	対象学生が申請を行い自動車運転の許可要件を満たした場合は、農学府・農学部長が許可し自動車運転を認める。 (不許可となった場合、指導教員および学生(学籍メールアドレス)にメール連絡を行う) ① 指導教員(指導者)が同行しない場合、大学院生(獣医5年次以上含む)の運転を認める。 (学部生(獣医は4年次以下)・研究生は認めない) 但し、単独運転は行わず、学部生以上の者を同乗させること。 ② 指導教員(指導者)が同行するが自動車運転をしない場合、 大学院生・学部4年次生(獣医5年次以上)・研究生の運転を認める。(学部3年次(獣医4年次)以下は認めない)				
目的	内容	(関連項目に✓を記入) <input type="checkbox"/> 卒論・修論 <input type="checkbox"/> 学会発表 <input type="checkbox"/> インターンシップ <input type="checkbox"/> 授業科目名: _____ <input type="checkbox"/> その他: _____			
	単位修得の希望: 無・有 → SPICA登録: 済・未登録 <input type="checkbox"/> 単位修得を希望する者は、実施日の1ヶ月前までに、「学外研究届(付表A-1, A-2)」と「科目履修登録届」を提出 (SPICAで履修登録済みの場合は「科目履修登録届」の提出は不要)				
※多数の場合は、名簿を添付のこと					
※参加学生	学科・専攻	学年	学籍番号	氏名	災害傷害・賠償保険の加入
					<input type="checkbox"/> 学研災 <input type="checkbox"/> 学研賠または学賠
					<input type="checkbox"/> 学研災 <input type="checkbox"/> 学研賠または学賠
<input type="checkbox"/>	安全管理の実施 参加学生に対し指導教員が講ずべき事項	①災害傷害および賠償責任保険の加入確認・指導 ②連絡方法・救急具の携行等、事前の安全教育の実施 ③学生が自動車運転を行う場合、本届に自動車運転許可申請書を添付し、農学府・農学部長の許可を得る			

- 注1. 学生は、本届の提出前に必ず災害傷害保険及び賠償責任保険に加入していること。
 災害傷害: 学研災(学生教育研究災害傷害保険) 賠償保険: 学研賠(学研災付賠償責任保険), 学賠(学生賠償責任保険・生協)
- 注2. 【保険加入の確認、問合せ及び保険加入手続きの窓口】 学生生活係
- 注3. 【本届の提出場所】 府中地区学生支援室 教務第一係
- 注4. 【本届の提出期日】 実施日の1週間前迄 但し、依頼状が必要な場合、単位修得を希望する場合→1ヶ月前迄
- 注5. 礼状の送付は、(付表C) 実施報告書の提出があった場合にのみ発行する。
- 注6. 学生が自動車運転を行う場合、本届と共に自動車運転許可申請書を提出のこと。

学外研究届（国内）（付表A-2）

（依頼状等の送付が必要な場合は学外研究届に必ず添付すること。）

学外研究・実習等に伴う依頼状等の送付先

種類	<input type="checkbox"/> 調査	<input type="checkbox"/> 見学	<input type="checkbox"/> 実習	<input type="checkbox"/> インターンシップ
1. 依頼状				
文書宛名（農学部府長名で依頼を行うため、主に所長・課長等の機関長・所属長名を記載する）				
機関名：				
役職：		氏名：		
封筒宛名（※手続き担当者等、文書宛名と異なる場合は記載する）				
所属部署名：				
役職名：		氏名：		
送付先住所				
<input type="checkbox"/> 研究先の所在地と同様				
〒				
TEL：				
2. その他送付書類				
<input type="checkbox"/> 無				
<input type="checkbox"/> 有 （ <input type="checkbox"/> 申請書 <input type="checkbox"/> 誓約書 <input type="checkbox"/> 保険加入証明書 <input type="checkbox"/> 覚書 <input type="checkbox"/> 他 ）				

(付表A-3)

学府長・学部長	事務長	学生支援室長	係長	主任	係員		担当

自動車運転許可申請書

農学府長・農学部長 殿

年 月 日

下記のとおり、学生の自動車運転について、許可願います。

指導教員名	(自署)
【内線番号: _____】	

記

日程	令和 年 月 日 () ~ 令和 年 月 日 ()	日間
行先		

	学科・専攻	学籍番号	氏名
運転者①			
	<input type="checkbox"/> 実質運転歴2年以上 <input type="checkbox"/> 責任50%以上の人身事故歴2年以上なし <input type="checkbox"/> 体調良好		
運転者②			
	<input type="checkbox"/> 実質運転歴2年以上 <input type="checkbox"/> 責任50%以上の人身事故歴2年以上なし <input type="checkbox"/> 体調良好		
運転者③			
	<input type="checkbox"/> 実質運転歴2年以上 <input type="checkbox"/> 責任50%以上の人身事故歴2年以上なし <input type="checkbox"/> 体調良好		
運転者④			
	<input type="checkbox"/> 実質運転歴2年以上 <input type="checkbox"/> 責任50%以上の人身事故歴2年以上なし <input type="checkbox"/> 体調良好		
同乗者①			
同乗者②			
同乗者③			
同乗者④			
自動車の種類 自家用車 (所有者) ・ レンタカー <input type="checkbox"/> 使用する自動車は、運転者が被保険者となる十分な補償内容 (対人無制限・対物・同乗者傷害) を備えた任意保険に加入している。 (レンタカーの場合は、上記の条件を満たす自動車保険に加入する)			

自動車運転許可対象学生	以下の対象学生が申請手続きを行い、自動車運転許可の要件※を満たす者に農学府・農学部長は自動車運転を認める。 ① 指導教員 (指導者) が同行しない場合、大学院生 (獣医5年次以上含む) の運転を認める。 (学部生 (獣医は4年次以下) ・ 研究生は認めない) なお、学部生以上の同乗者を同乗させること。 ② 指導教員 (指導者) が同行するが自動車運転をしない場合、大学院生・学部4年次生 (獣医5年次以上) ・ 研究生の運転を認める。 (学部3年次 (獣医4年次) 以下は認めない) ※ ・ 実質運転歴2年以上 ・ 責任50%以上の人身事故歴2年以上なし ・ 体調良好の者
-------------	---

注1. 学生は、本届の提出前に必ず災害傷害保険及び賠償責任保険に加入していること。

災害傷害: 学研災 (学生教育研究災害傷害保険) 賠償保険: 学研賠 (学研災付賠償責任保険), 学賠 (学生賠償責任保険・生協)

2. 【保険加入の確認、問合せ及び保険加入手続きの窓口】 学生生活係

3. 【本書の提出場所】 府中地区学生支援室 教務第一係

4. 【本書の申請期日】 実施日の1週間前迄 (学外研究届と共に提出) ※申請の提出が遅れた場合、運転の許可を認めない。

5. 申請の結果、不許可になった場合に限り、指導教員および申請学生 (学生メールアドレス) にメールで連絡を行う。

国内の緊急連絡先 Emergency Contact in Japan	氏名Name :	続柄Relation :
住所Address :		
TEL:	携帯 Mobile :	
パスポート Passport	氏名(アルファベット表記) Name in alphabet	No.
海外旅行保険 Travel Insurance	加入保険会社名 : Insurance Company	

※原則、「付帯海学」に加入してください。
※Please join the the "Futai Kaigaku" insurance.

Attention International Students!! For Temporary Leave, please fill in below. 外国人留学生の一時帰国の場合は下記を記入してください。	
奨学金の種類 Type of scholarship	<input type="checkbox"/> 国費 Japanese Government Scholarship Student <input type="checkbox"/> 政府派遣 Foreign Government Sponsored Student <input type="checkbox"/> 私費 Student at Private Expense (<input type="checkbox"/> 学習奨励費 Honors Scholarship)
備考 Note	

スケジュール表 (別紙可) Itinerary (Please add appendix if necessary)

年月日 Date	発着地名・交通手段(便名)* Departure/Destination	訪問先 Visiting institution	滞在日数 Days	用務 Business

*発着地名と飛行機(便名)、バス、電車等の移動交通手段を記入して下さい。

*Please input port of departure, destination, and means of transportation including airline (flight No.), bus, and train.

<input type="checkbox"/> 国内で空港までの往復等に自主運転で自動車を利用する予定がある I plan to drive myself to and from domestic airports.	【運転歴 : 年】 Driving Experience (Year)
<input type="checkbox"/> 海外で交通手段として、自主運転で自動車を利用する予定がある I plan to drive myself to and from overseas airports.	

学府長・学部長	事務長	学生支援室長	係長	主任	係員		担当

(付表C)

年 月 日

農 学 部 長 殿
農 学 府 長 殿

指導教員氏名 (自署) _____ 印
内線 :

学 外 研 究 実 施 に つ い て (報 告)

下記のとおり、大学の研究教育活動の一環として

調査 見学 実習 インターンシップ その他

を実施いたしましたので、報告いたします。

記

参加学生 (※欄が不足する場合は、名簿を用意ください。)				
	学科・専攻名	年次	学籍番号	氏 名
1				
2				
3				
4				
5				
実施日 (期間)		令和 年 月 日 () ~ 令和 年 月 日 ()		
実 施 時 間		時 分 ~ 時 分		
研究先 (研修場所)		名 称	〒 TEL :	
		所在地		
引率教員		無 ・ 有 (引率教員名 : _____)		
礼 状	宛 名	機関 :	役職 :	氏名 :
	住 所	〒 _____ <input type="checkbox"/> 研究先所在地と同じ (記入不要)		
	封筒宛名	※ 宛名と封筒宛名が違う場合 部署 : _____ 役職 : _____ 氏名 : _____		
備 考				

※2

学部生 教育委員	大学院生 指導教員

提出日： 年 月 日

農学府・農学部科目履修登録届（学外実習等用）

（令和 年度 学期開講分）

農学部 ・ 農学府	学科名・専攻名	学年	学籍番号	氏 名

（理由）該当するものに○をつけてください。

<input type="checkbox"/> Web登録不可の科目であるため
--

（注意事項）

- ・黒または青のインクでの記入、修正テープ（液）の使用は無効です。
- ・重複履修は認められません。（同曜日・同時限の科目がない事を確認してください。）
- ・部局コードは下表で確認のうえ記入してください。

部局	農学部	農学府	獣医学 専攻
コード	01	05	71

- ・学部生は学科教育委員、大学院生は指導教員の確認印（用紙上部）が必要になります。

【履修を希望する科目】

1	部局 コード	学科・専攻・プログラム	授業科目名	単位数	担当教員印
		学科 専攻 プログラム			
実施期間		年 月 日～ 月 日 ()日間			
2	部局 コード	学科・専攻・プログラム	授業科目名	単位数	担当教員印
		学科 専攻 プログラム			
実施期間		年 月 日～ 月 日 ()日間			

SPICA	
履修登録日	成績登録日

